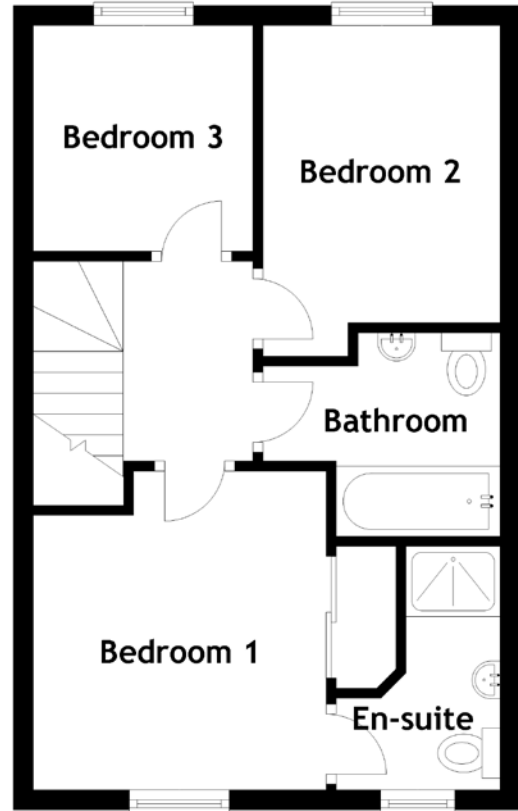
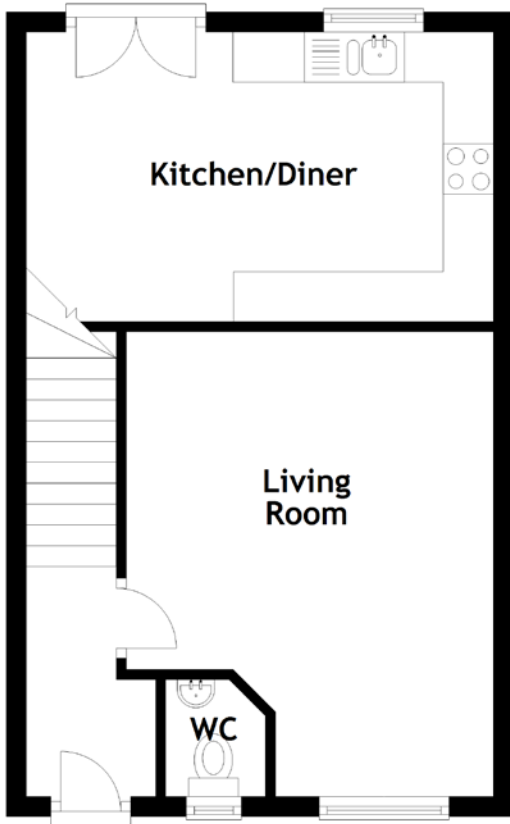


# FLOOR PLAN, DIMENSIONS & MAP



Approximate Dimensions  
(Taken from the widest point)

Living Room	4.64m (15'3") x 3.67m (12')
Kitchen/Diner	4.67m (15'4") x 2.89m (9'6")
WC	1.17m (3'10") x 1.00m (3'3")
Bedroom 1	3.18m (10'5") x 2.93m (9'7")

En-suite	2.43m (8') x 1.64m (5'5")
Bedroom 2	3.30m (10'10") x 2.43m (8')
Bedroom 3	2.25m (7'5") x 2.20m (7'2")
Bathroom	2.41m (7'11") x 2.03m (6'8")

Gross internal floor area (m<sup>2</sup>): 75m<sup>2</sup>  
EPC Rating: B

