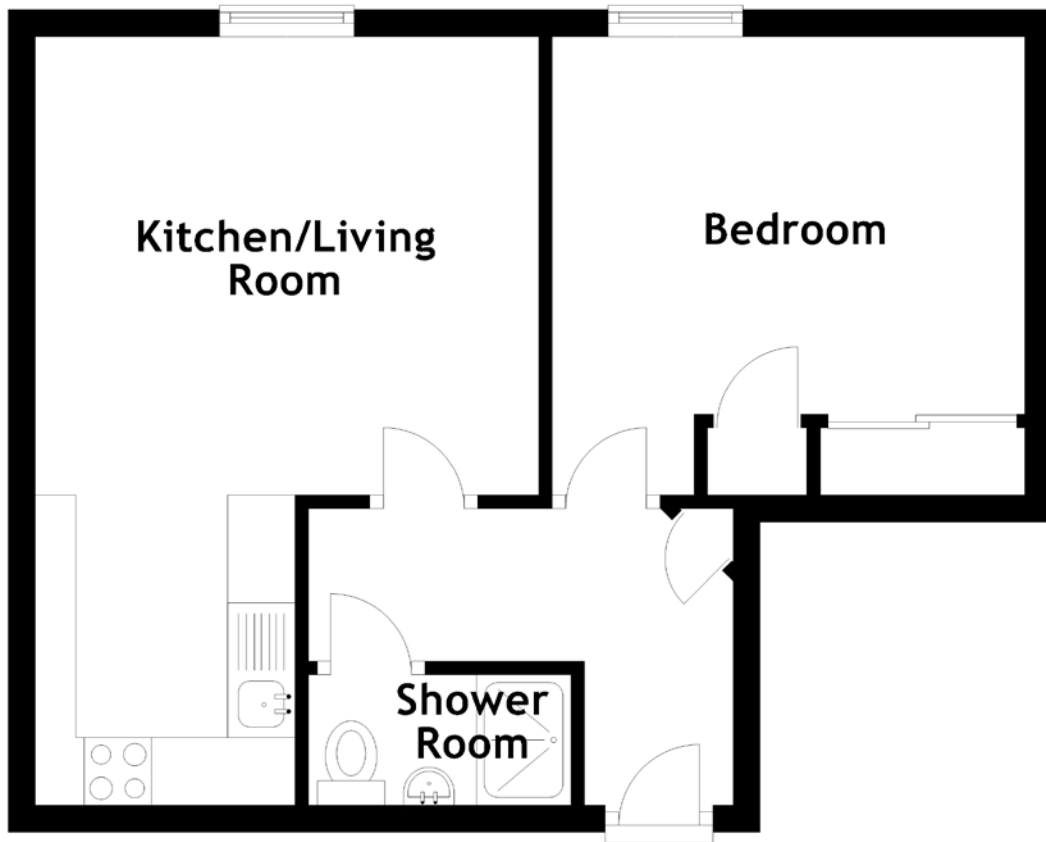


FLOOR PLAN, DIMENSIONS & MAP



Approximate Dimensions (Taken from the widest point)

Kitchen/Living Room 5.70m (18'8") x 3.74m (12'3")
Bedroom 3.51m (11'6") x 3.40m (11'2")
Shower Room 1.95m (6'5") x 0.97m (3'2")

Gross internal floor area (m²): 35m²

EPC Rating: C

