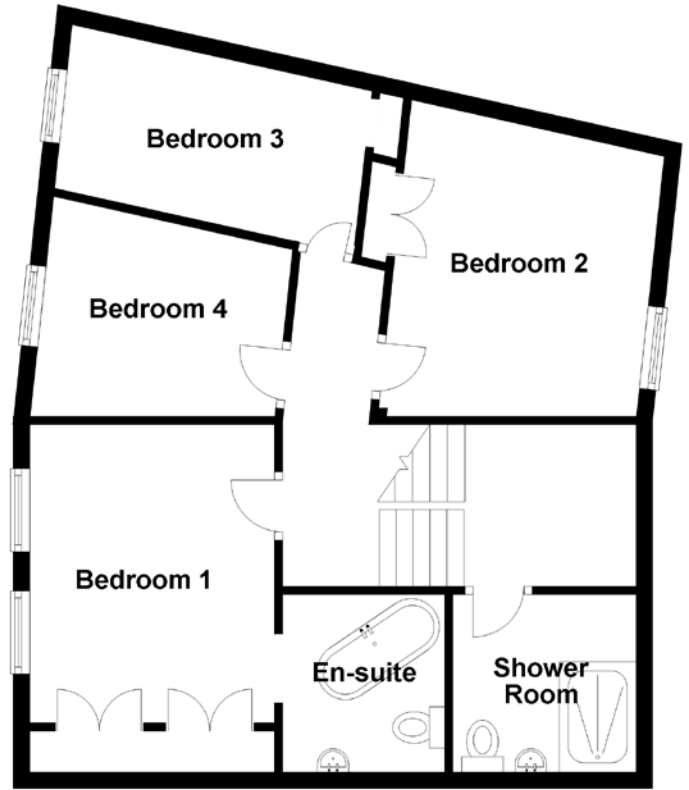
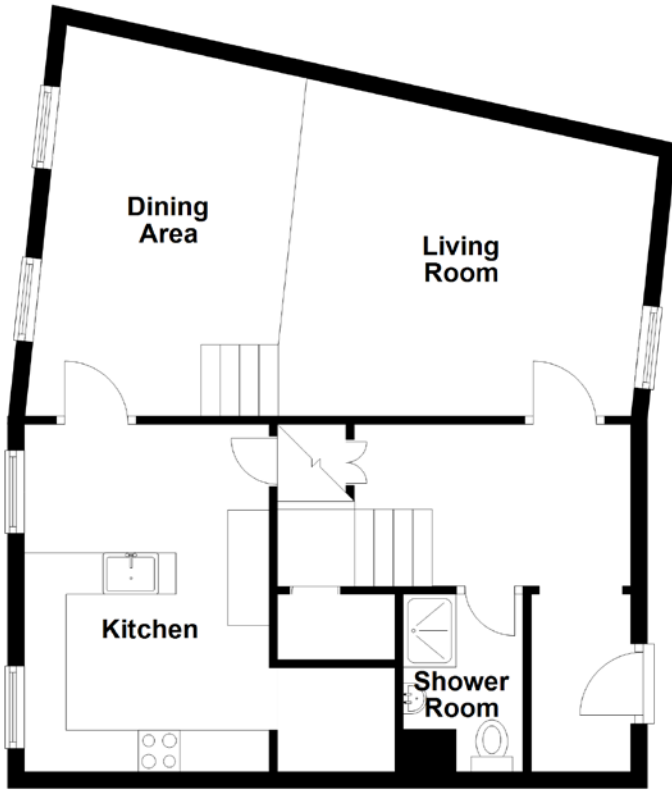


FLOOR PLAN, DIMENSIONS & MAP



Approximate Dimensions (Taken from the widest point)

Living Room/Dining Area	7.24m (23'9") x 3.94m (12'11")
Kitchen	4.19m (13'9") x 2.95m (9'8")
Shower Room (GF)	2.14m (7') x 1.25m (4'1")
Shower Room (HL)	2.21m (7'3") x 2.20m (7'3")
Bedroom 1	3.60m (11'10") x 2.88m (9'5")

En-suite	2.26m (7'5") x 2.12m (7')
Bedroom 2	3.37m (11'1") x 3.09m (10'2")
Bedroom 3	3.68m (12'1") x 2.20m (7'3")
Bedroom 4	2.88m (9'6") x 2.79m (9'2")

Gross internal floor area (m²): 115m²
EPC Rating: C

