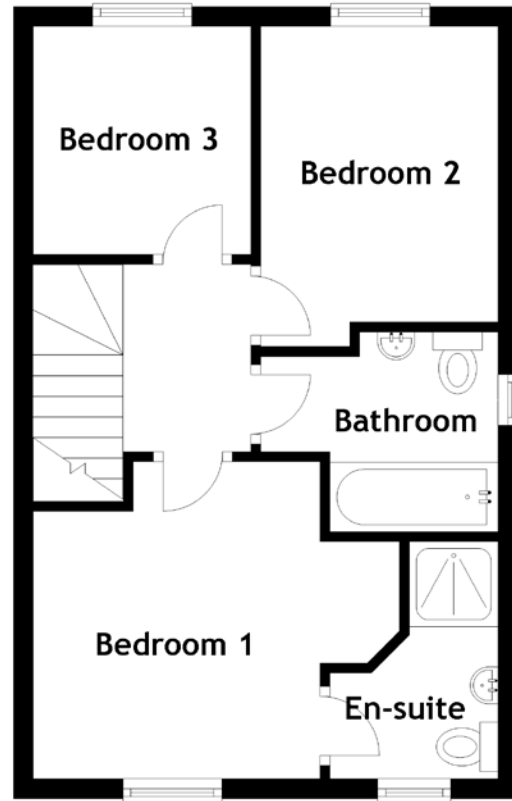
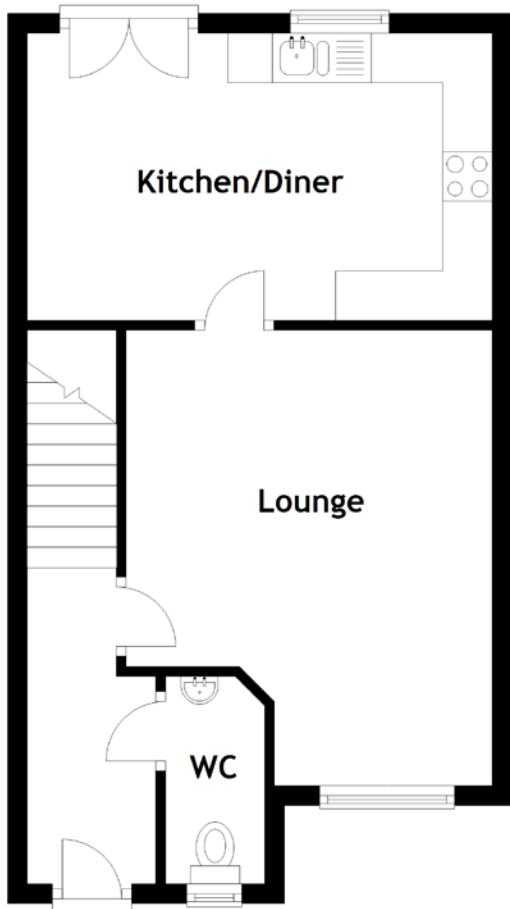


FLOOR PLAN, DIMENSIONS & MAP



Approximate Dimensions
(Taken from the widest point)

Lounge	4.60m (15'1") x 3.70m (12'2")
Kitchen/Diner	4.70m (15'5") x 2.90m (9'6")
WC	1.95m (6'5") x 1.00m (3'3")
Bathroom	3.90m (12'10") x 2.02m (6'7")

Bedroom 1	3.20m (10'6") x 2.90m (9'6")
En-suite	2.40m (7'10") x 1.70m (5'7")
Bedroom 2	3.23m (10'7") x 2.40m (7'10")
Bedroom 3	2.30m (7'7") x 2.20m (7'3")

Gross internal floor area (m²): 74m²
EPC Rating: C

