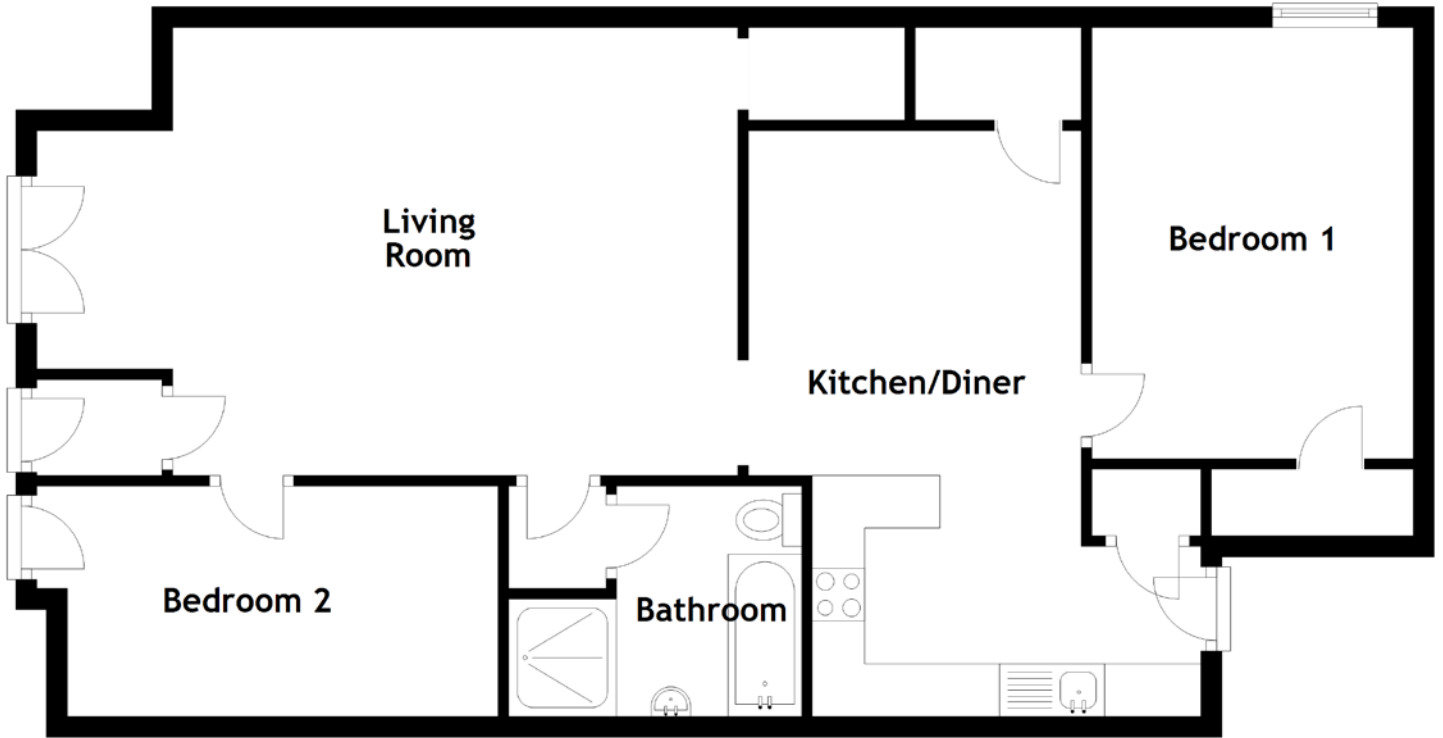


FLOOR PLAN, DIMENSIONS & MAP



Approximate Dimensions (Taken from the widest point)

Living Room 6.67m (21'11") x 4.26m (14')
 Kitchen/Diner 5.57m (18'3") x 3.70m (12'2")
 Bathroom 2.79m (9'2") x 2.21m (7'3")

Bedroom 1 4.10m (13'5") x 3.06m (10')
 Bedroom 2 3.49m (11'6") x 2.19m (7'2")

Gross internal floor area (m²): 82m²
 EPC Rating: C

