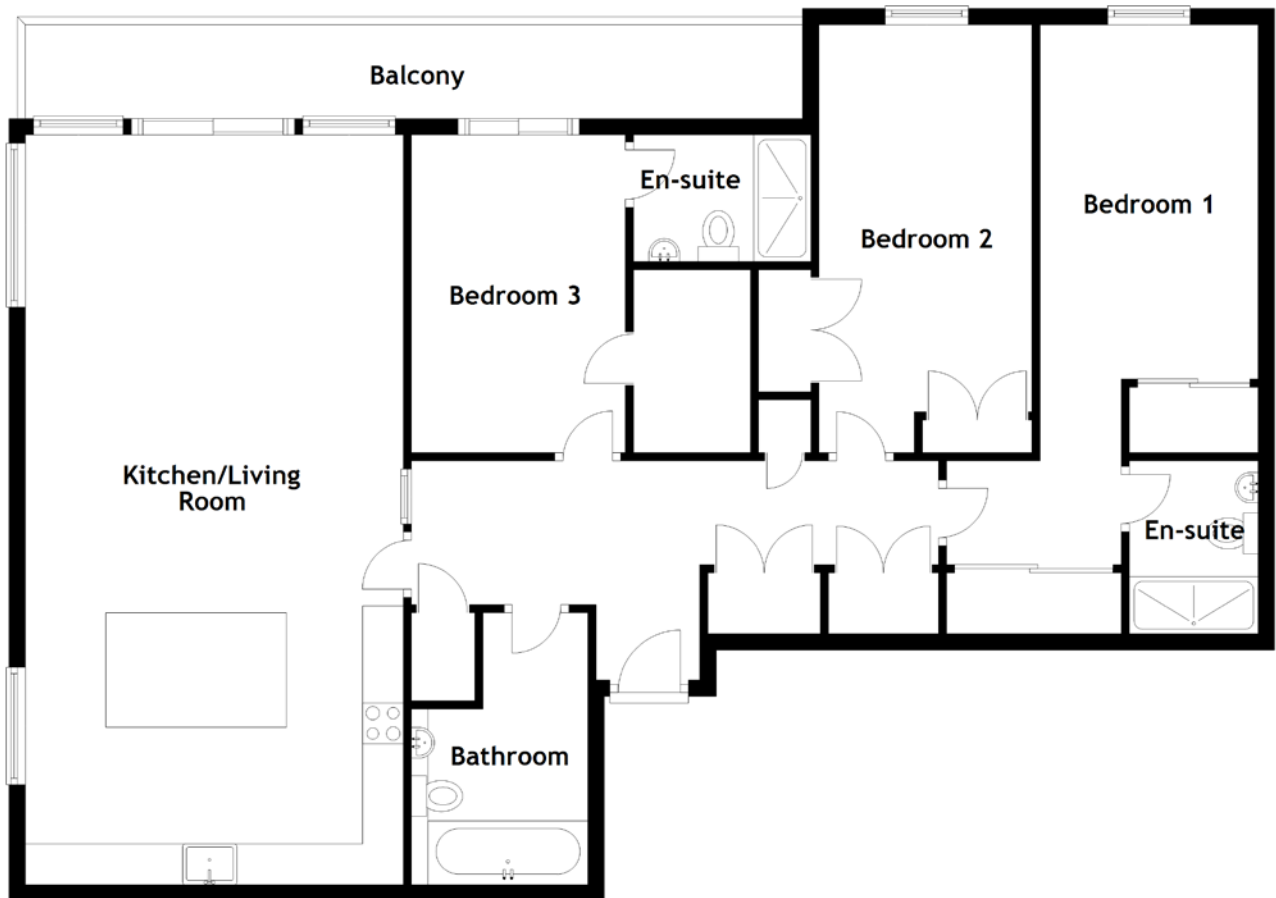


FLOOR PLAN, DIMENSIONS & MAP



Approximate Dimensions (Taken from the widest point)

Kitchen/Living Room	9.18m (30'1") x 4.63m (15'2")
Bathroom	3.33m (10'11") x 2.16m (7'1")
Bedroom 1	6.61m (21'8") x 2.67m (8'9")
En-suite	2.17m (7'1") x 1.58m (5'2")

Bedroom 2	5.24m (17'2") x 2.61m (8'7")
Bedroom 3	3.89m (12'9") x 2.62m (8'7")
En-suite	2.17m (7'1") x 1.55m (5'1")

Gross internal floor area (m²): 119m²
EPC Rating: C

