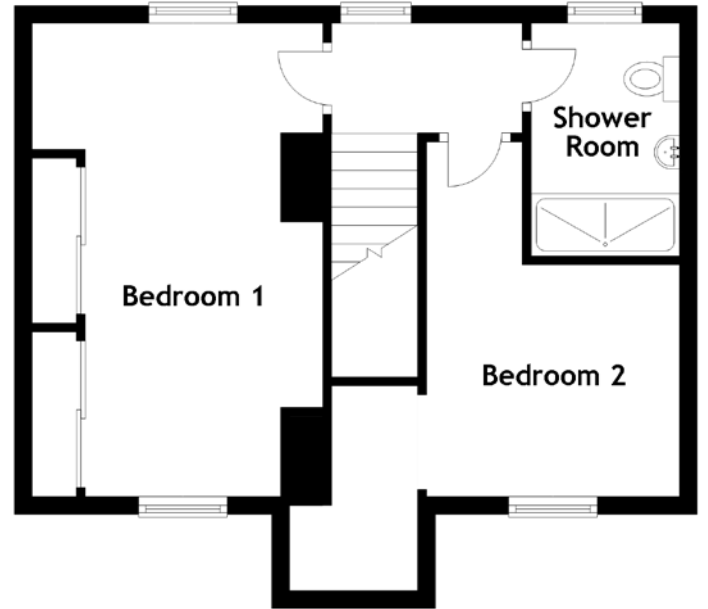
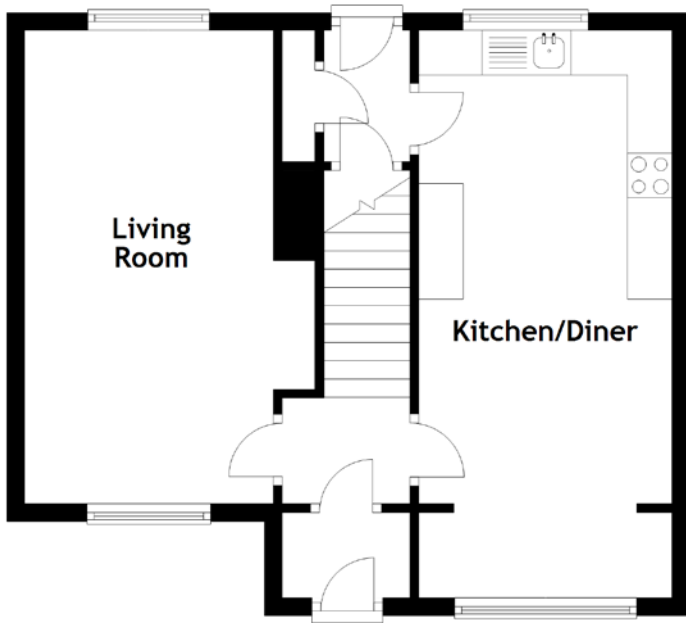


FLOOR PLAN, DIMENSIONS & MAP



[CLICK HERE FOR
VIRTUAL TOUR](#)

Approximate Dimensions (Taken from the widest point)

Living Room 5.32m (17'5") x 3.27m (10'9")
Kitchen/Diner 5.32m (17'5") x 2.85m (9'4")
Shower Room 2.61m (8'7") x 1.67m (5'6")

Bedroom 1 5.32m (17'5") x 3.62m (11'10")
Bedroom 2 3.99m (13'1") x 2.85m (9'4")

Gross internal floor area (m²): 83m²
EPC Rating: E

