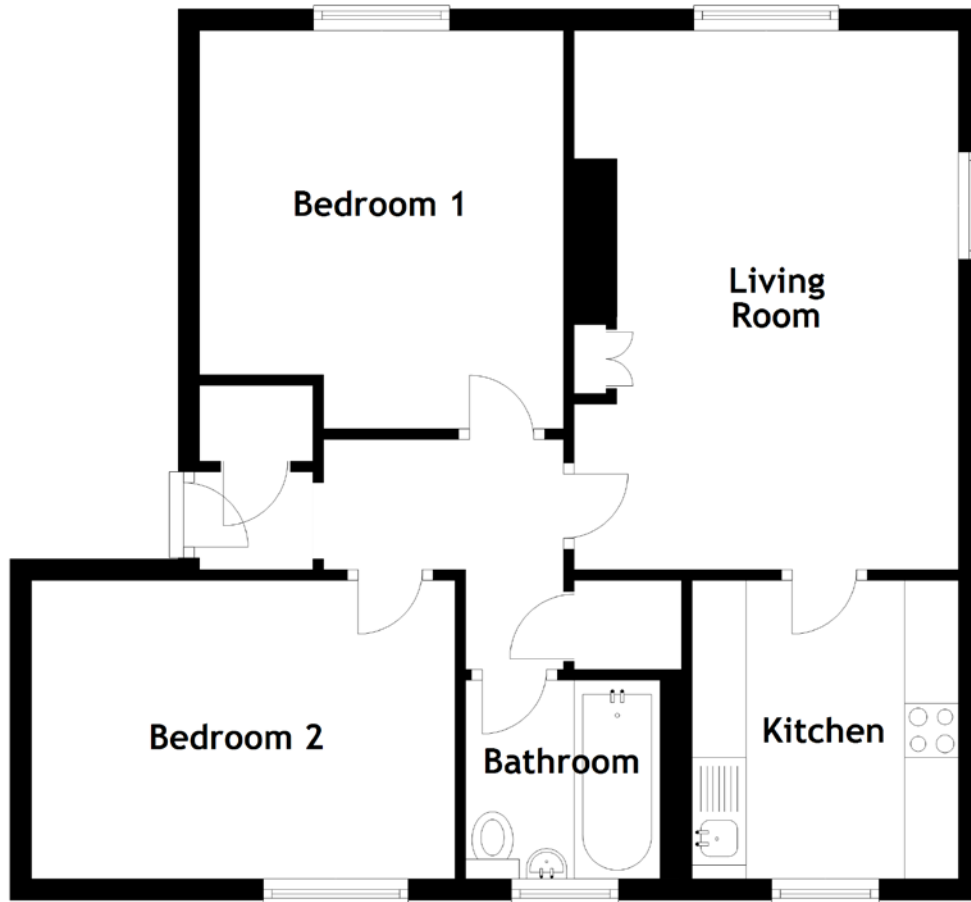


FLOOR PLAN, DIMENSIONS & MAP



Approximate Dimensions (Taken from the widest point)

Living Room 5.02m (16'6") x 3.58m (11'9")
 Kitchen 2.78m (9'1") x 2.48m (8'2")
 Bathroom 1.85m (6'1") x 1.81m (5'11")

Bedroom 1 3.71m (12'2") x 3.39m (11'1")
 Bedroom 2 3.94m (12'11") x 2.77m (9'1")

Gross internal floor area (m²): 62m²
 EPC Rating: C

