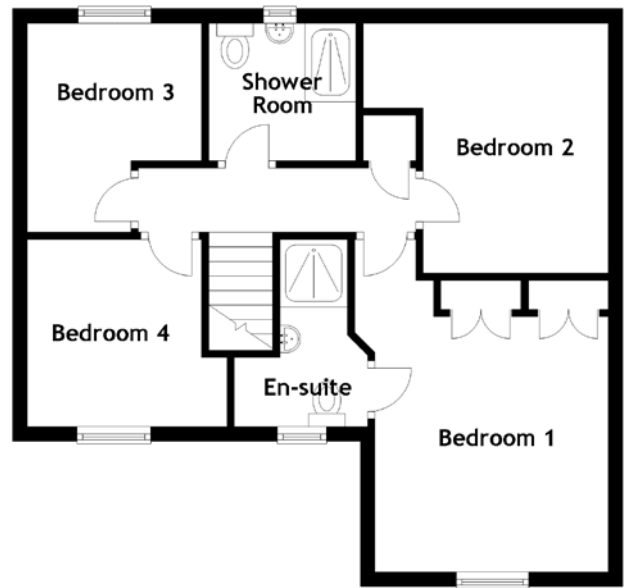
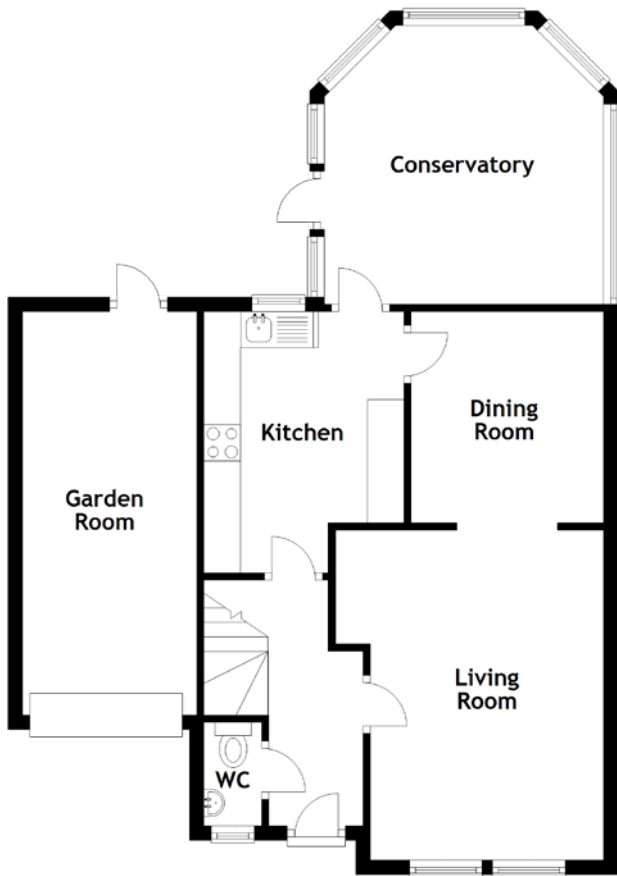


FLOOR PLAN, DIMENSIONS & MAP



Approximate Dimensions
(Taken from the widest point)

Living Room	4.55m (14'11") x 3.69m (12'1")
Dining Room	2.91m (9'7") x 2.65m (8'8")
Kitchen	3.60m (11'10") x 2.75m (9')
Conservatory	3.85m (12'7") x 3.85m (12'7")
WC	1.43m (4'8") x 0.79m (2'7")
Shower Room	2.02m (6'8") x 1.90m (6'3")

Bedroom 1	4.58m (15') x 3.21m (10'6")
En-suite	2.58m (8'6") x 1.92m (6'4")
Bedroom 2	3.88m (12'9") x 3.44m (11'4")
Bedroom 3	2.73m (8'11") x 2.40m (7'10")
Bedroom 4	2.76m (9'1") x 2.40m (7'10")
Garage	5.56m (18'3") x 2.40m (7'10")

Gross internal floor area (m²): 93m²
EPC Rating: D

