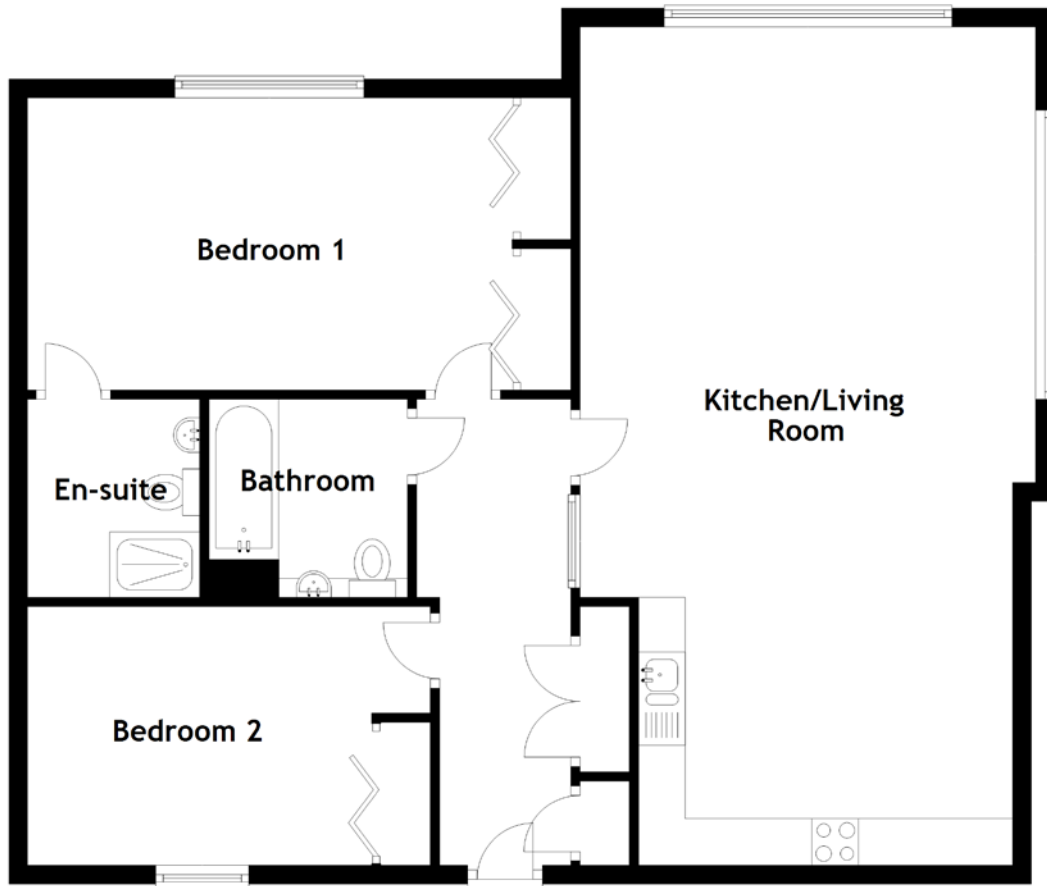


# FLOOR PLAN, DIMENSIONS & MAP



Approximate Dimensions (Taken from the widest point)

Kitchen/Living Room 9.00m (29'6") x 4.89m (16'1")  
 Bedroom 1 5.20m (17'1") x 3.14m (10'4")  
 En-suite 2.13m (7') x 1.85m (6'1")

Bedroom 2 4.32m (14'2") x 2.78m (9'1")  
 Bathroom 2.15m (7'1") x 2.13m (7')

Gross internal floor area (m<sup>2</sup>): 100m<sup>2</sup>  
 EPC Rating: B

