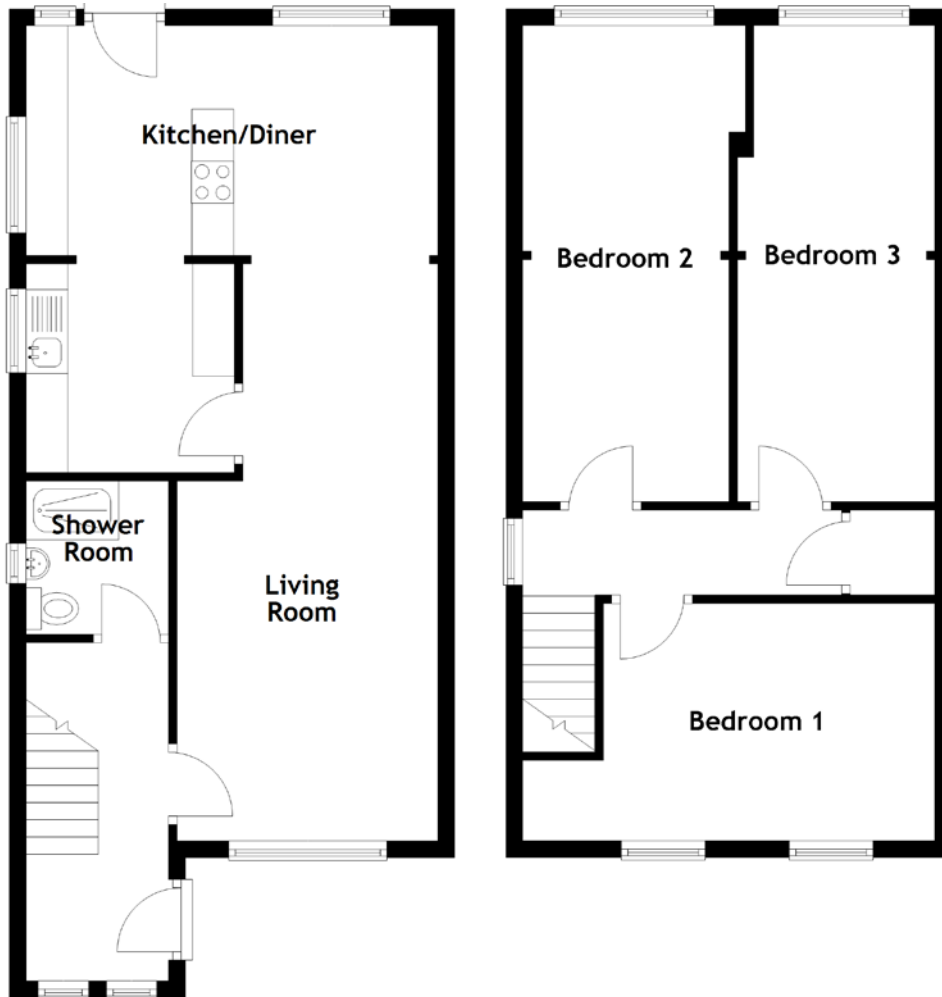


FLOOR PLAN, DIMENSIONS & MAP



Approximate Dimensions
(Taken from the widest point)

Living Room 6.88m (22'7") x 3.11m (10'2")
 Kitchen/Diner 5.34m (17'6") x 4.91m (16'1")
 Shower Room 1.83m (6') x 1.70m (5'7")

Bedroom 1 4.91m (16'1") x 2.83m (9'3")
 Bedroom 2 5.70m (18'8") x 2.46m (8'1")
 Bedroom 3 5.70m (18'8") x 2.35m (7'9")

Gross internal floor area (m²): 101m²
 EPC Rating: C

