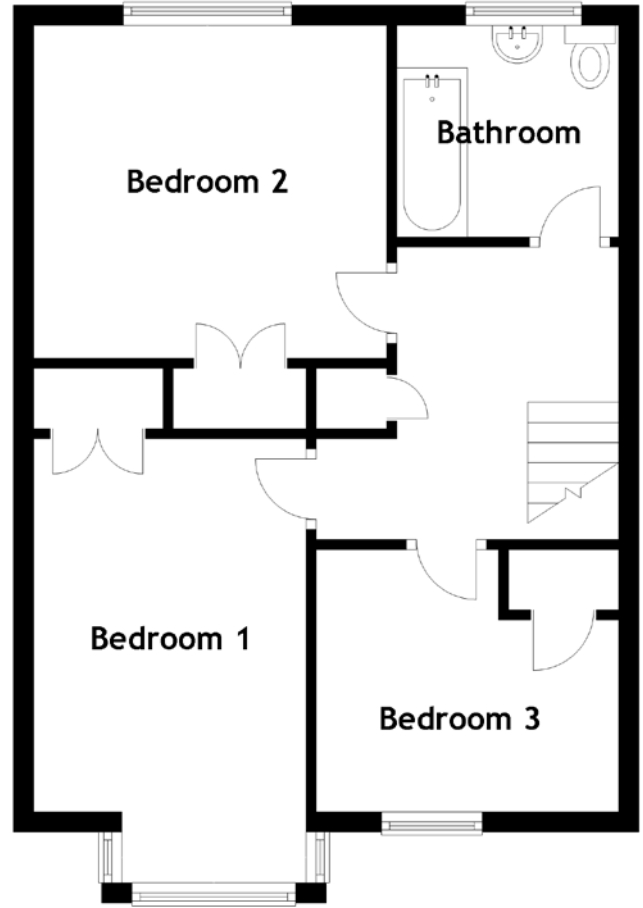
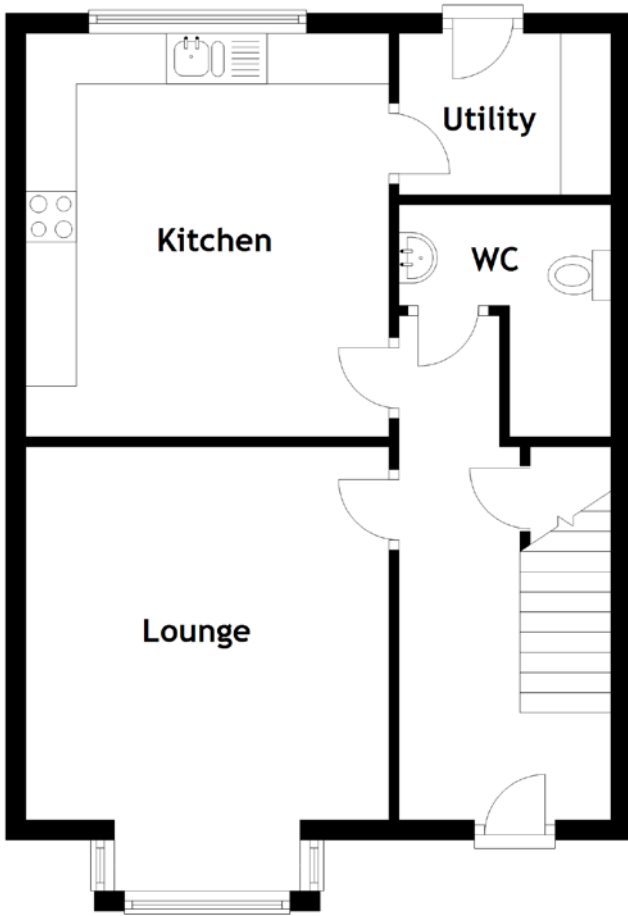


FLOOR PLAN, DIMENSIONS & MAP



Approximate Dimensions
(Taken from the widest point)

Lounge	4.40m (14'5") x 3.60m (11'10")
Kitchen	4.00m (13'1") x 3.60m (11'10")
Utility	2.10m (6'11") x 1.60m (5'3")
WC	2.30m (7'7") x 2.10m (6'11")
Bathroom	2.20m (7'3") x 2.10m (6'11")

Bedroom 1	4.55m (14'11") x 2.75m (9')
Bedroom 2	3.50m (11'6") x 3.30m (10'10")
Bedroom 3	2.95m (9'8") x 2.60m (8'6")

Gross internal floor area (m²): 93m² | EPC Rating: C

Extras: Carpets and floor coverings, light fixtures and fittings, blinds. Furniture is negotiable with the seller.

