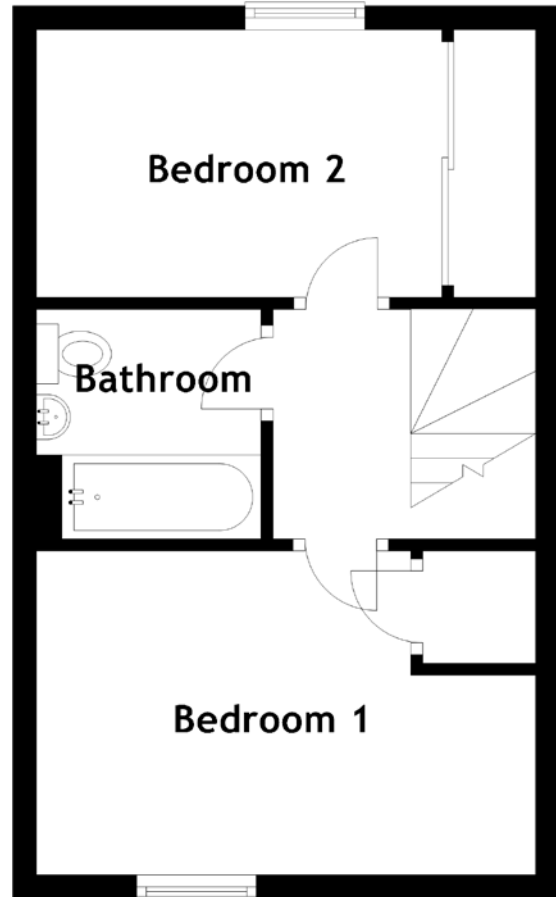
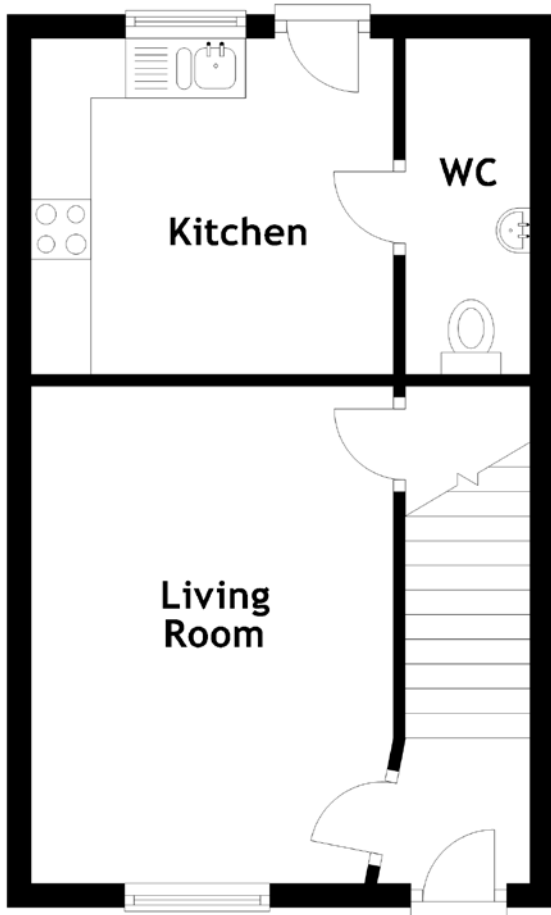


# FLOOR PLAN, DIMENSIONS & MAP



Approximate Dimensions (Taken from the widest point)

Living Room 4.16m (13'8") x 3.03m (9'11")  
 Kitchen 3.03m (9'11") x 2.81m (9'3")  
 WC 2.81m (9'3") x 1.04m (3'5")

Bathroom 1.92m (6'4") x 1.88m (6'2")  
 Bedroom 1 4.12m (13'6") x 2.71m (8'11")  
 Bedroom 2 3.39m (11'1") x 2.24m (7'4")

Gross internal floor area (m<sup>2</sup>): 57m<sup>2</sup> | EPC Rating: C

