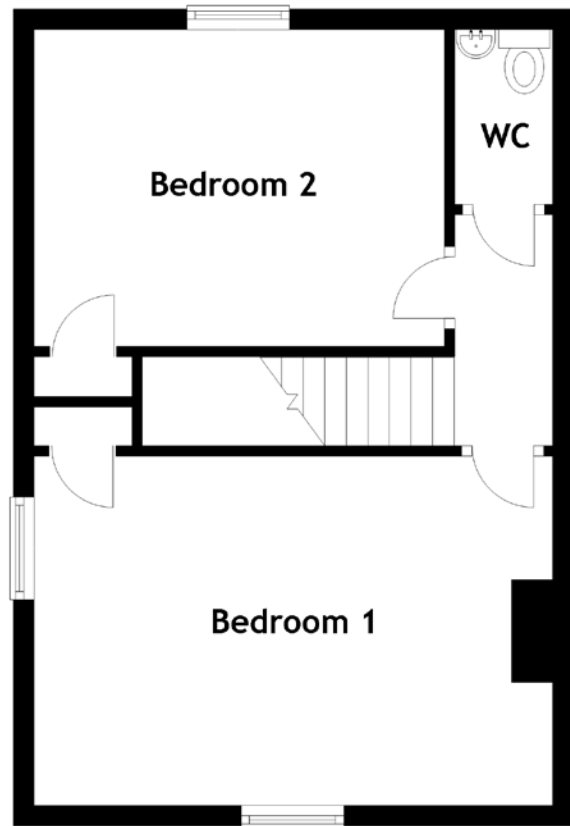
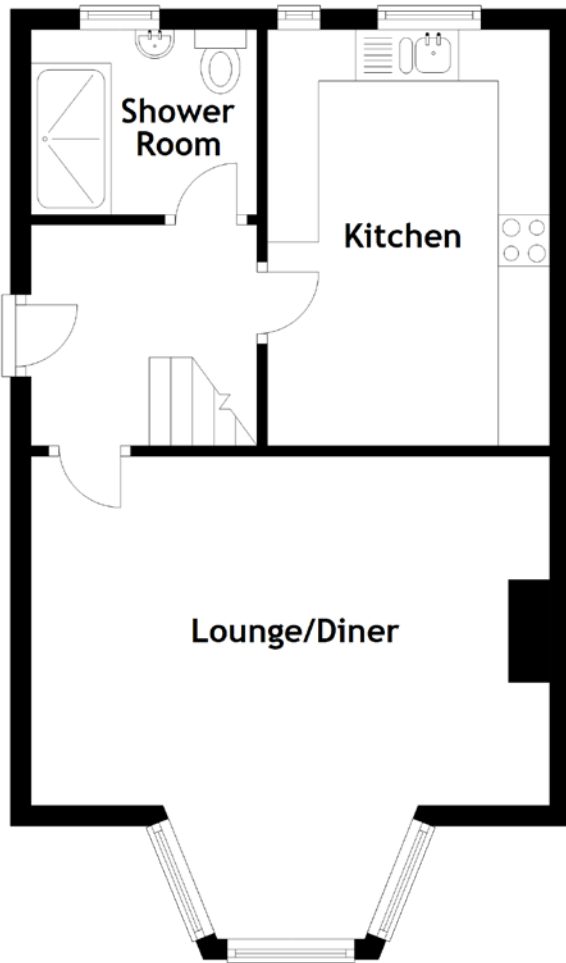


# FLOOR PLAN, DIMENSIONS & MAP



Approximate Dimensions  
(Taken from the widest point)

Lounge/Diner 5.05m (16'7") x 4.70m (15'5")  
 Kitchen 4.05m (13'3") x 2.75m (9')  
 Shower Room 2.20m (7'3") x 1.80m (5'11")

Bedroom 1 5.15m (16'11") x 3.40m (11'2")  
 Bedroom 2 4.00m (13'1") x 3.00m (9'10")  
 WC 1.70m (5'7") x 1.05m (3'5")

Gross internal floor area (m<sup>2</sup>): 78m<sup>2</sup>  
 EPC Rating: C

