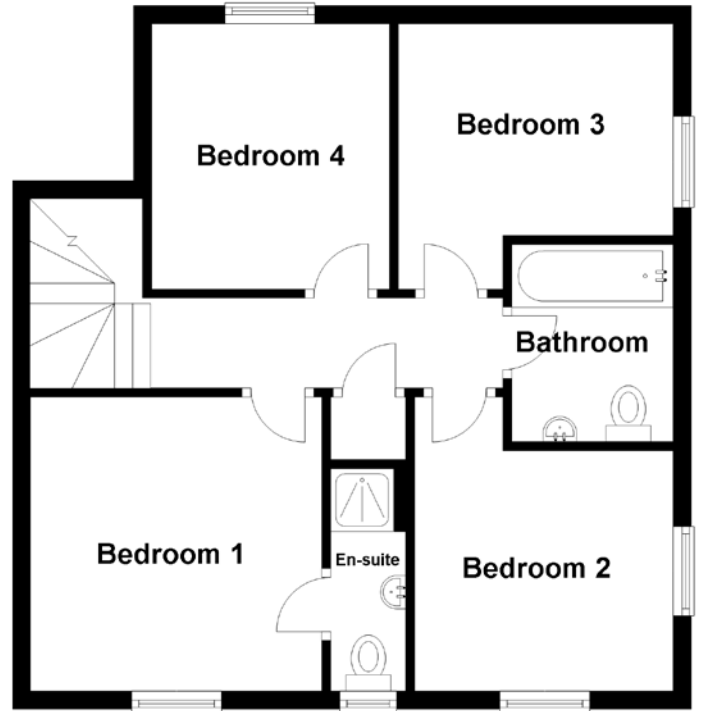
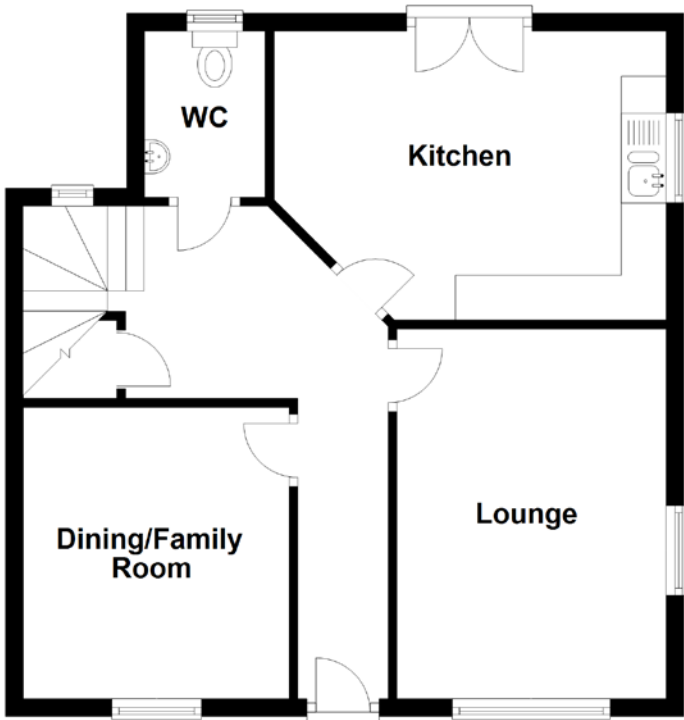


FLOOR PLAN, DIMENSIONS & MAP



Approximate Dimensions (Taken from the widest point)

Lounge	4.12m (13'6") x 3.00m (9'10")
Kitchen	4.37m (14'4") x 3.22m (10'7")
Dining/Family Room	3.25m (10'8") x 2.96m (9'9")
Bedroom 1	3.28m (10'9") x 3.25m (10'8")
Bedroom 2	3.28m (10'9") x 2.88m (9'5")

Bedroom 3	3.06m (10'1") x 2.96m (9'8")
Bedroom 4	2.96m (9'8") x 2.65m (8'8")

Gross internal floor area (m²): 107m² | EPC Rating: C

Extras: Floor coverings, light fittings, blinds and window dressings.

