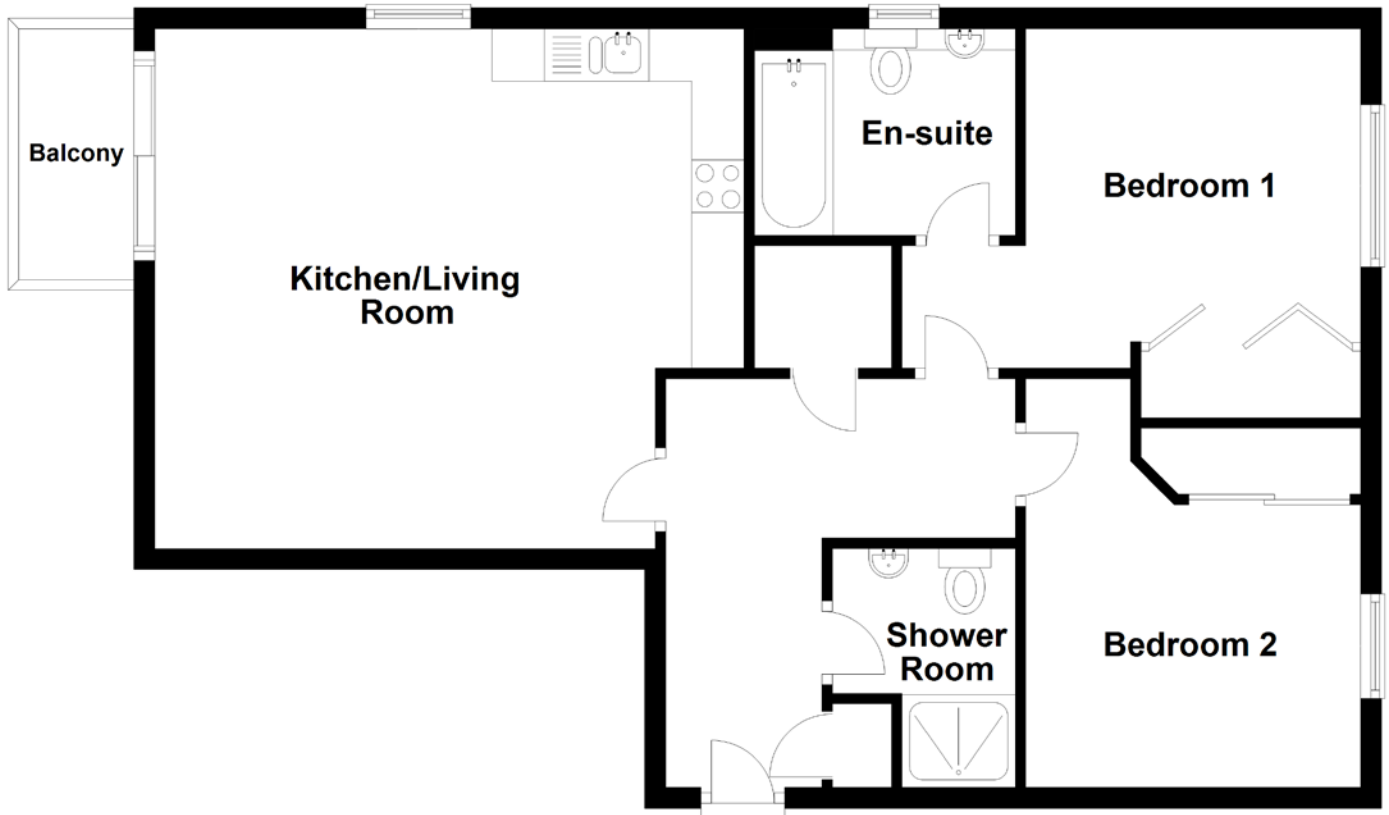


FLOOR PLAN, DIMENSIONS & MAP



Approximate Dimensions (Taken from the widest point)

Kitchen/Living Room 5.63m (18'6") x 4.96m (16'3")
 Bedroom 1 4.38m (14'4") x 3.24m (10'7")
 En-suite 2.49m (8'2") x 1.97m (6'6")

Bedroom 2 3.20m (10'6") x 2.00m (6'7")
 Shower Room 2.28m (7'6") x 1.75m (5'9")

Gross internal floor area (m²): 73m²
 EPC Rating: C

