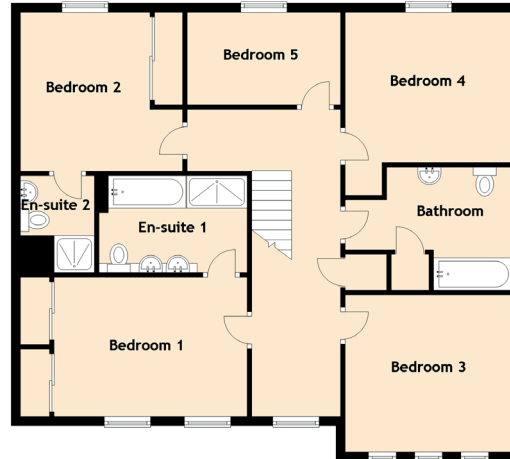
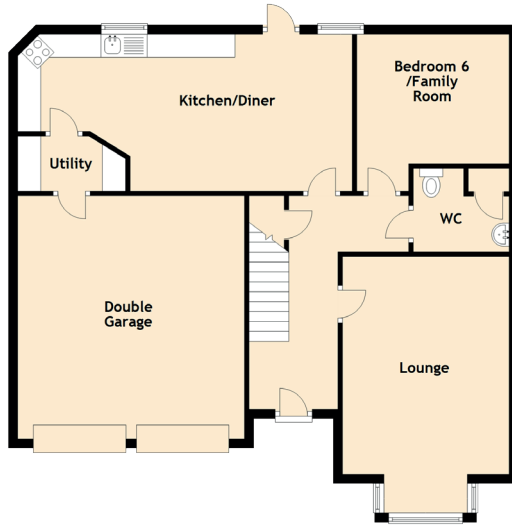


3 South Chesters Grove

BONNYRIGG, MIDLOTHIAN, EH19 3WG



Approximate Dimensions (Taken from the widest point)

Ground Floor

Lounge	5.54m (18'2") x 3.60m (11'10")
Bedroom 6/Family Room	3.50m (11'6") x 3.29m (10'10")
Kitchen/Diner	7.23m (23'9") x 3.50m (11'6")
Utility	2.33m (7'8") x 1.19m (3'11")
WC	2.07m (6'9") x 1.80m (5'11")
Double Garage	5.25m (17'3") x 4.90m (16'1")

First Floor

Bedroom 1	4.17m (13'8") x 3.01m (9'11")
En-suite 1	3.20m (10'6") x 2.10m (6'10")
Bedroom 2	3.50m (11'6") x 3.43m (11'3")
En-suite 2	2.10m (6'10") x 1.60m (5'3")
Bedroom 3	3.48m (11'5") x 3.40m (11'2")
Bedroom 4	3.40m (11'2") x 3.25m (10'8")
Bedroom 5	3.31m (10'11") x 2.00m (6'7")
Bathroom	3.46m (11'4") x 2.66m (8'9")