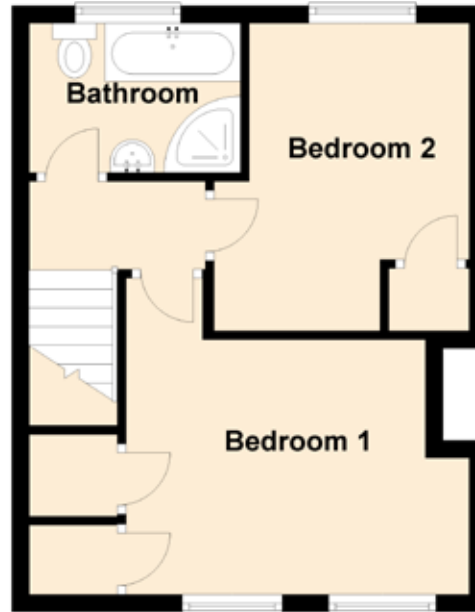
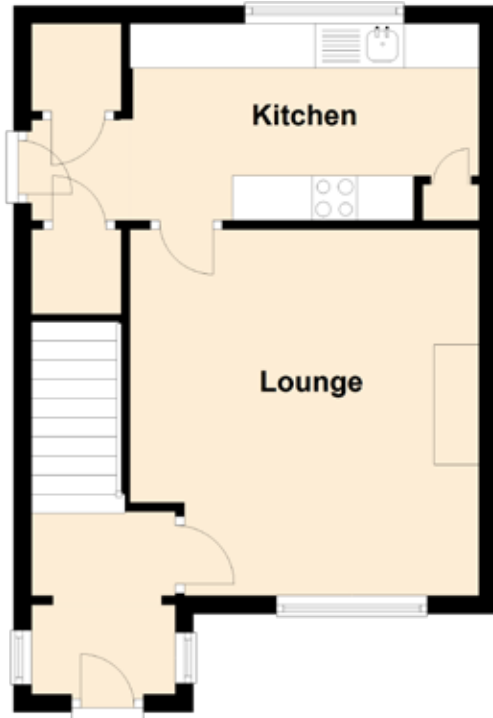


1 Tomatin Road

INVERNESS, HIGHLANDS, IV2 4UA



Approximate Dimensions (Taken from the widest point)

Lounge	4.19m (13'9") x 3.90m (12'10")
Kitchen	3.60m (11'10") x 2.20m (7'3")
Bedroom 1	3.90m (12'10") x 3.60m (11'10")
Bedroom 2	3.50m (11'6") x 2.90m (9'6")
Bathroom	2.40m (7'10") x 1.70m (5'7")