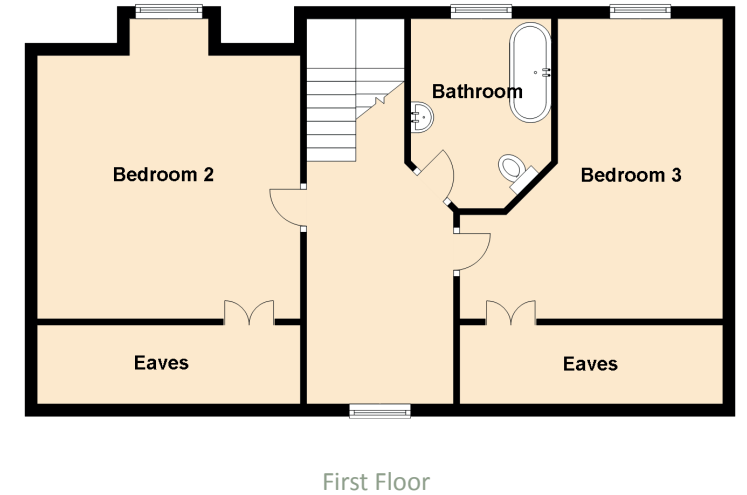
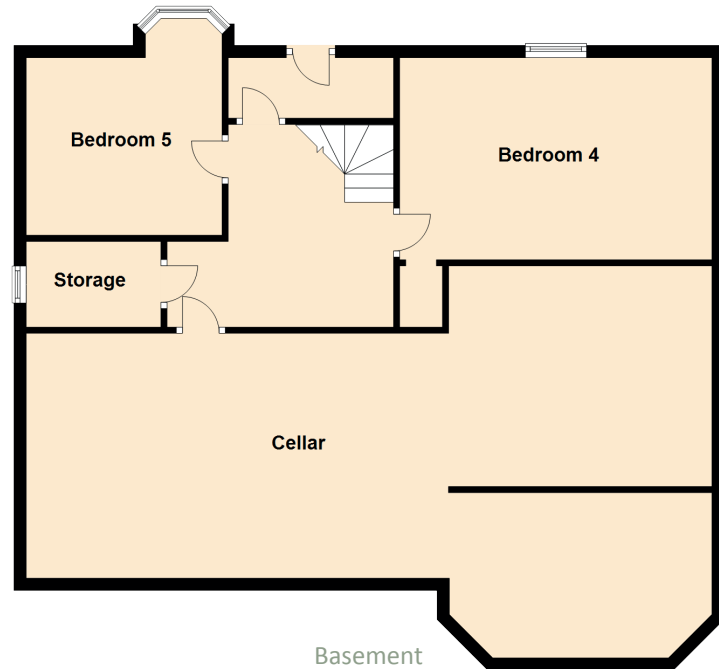


Kinnaird Bank

MAIN STREET, GLENFARG, PERTHSHIRE, PH2 9NY



Approximate Dimensions (Taken from the widest point)

Basement
Bedroom 4 5.20m (17'1") x 3.30m (10'10")
Bedroom 5 3.20m (10'6") x 2.90m (9'6")
Storage 2.20m (7'3") x 1.40m (4'7")
Cellar 11.40m (37'5") x 5.30m (17'5")

Ground Floor
Bedroom 1 4.40m (14'5") x 4.30m (14'1")
Dining Room 4.30m (14'1") x 4.00m (13'1")
Lounge 5.20m (17'1") x 4.20m (13'9")
Kitchen 3.30m (10'10") x 3.20m (10'6")
Shower Room 2.00m (6'7") x 1.70m (5'7")

First Floor
Bathroom 3.10m (10'2") x 2.30m (7'7")
Bedroom 3 4.90m (16'1") x 4.30m (14'1")
Bedroom 2 4.30m (14'1") x 4.20m (13'9")