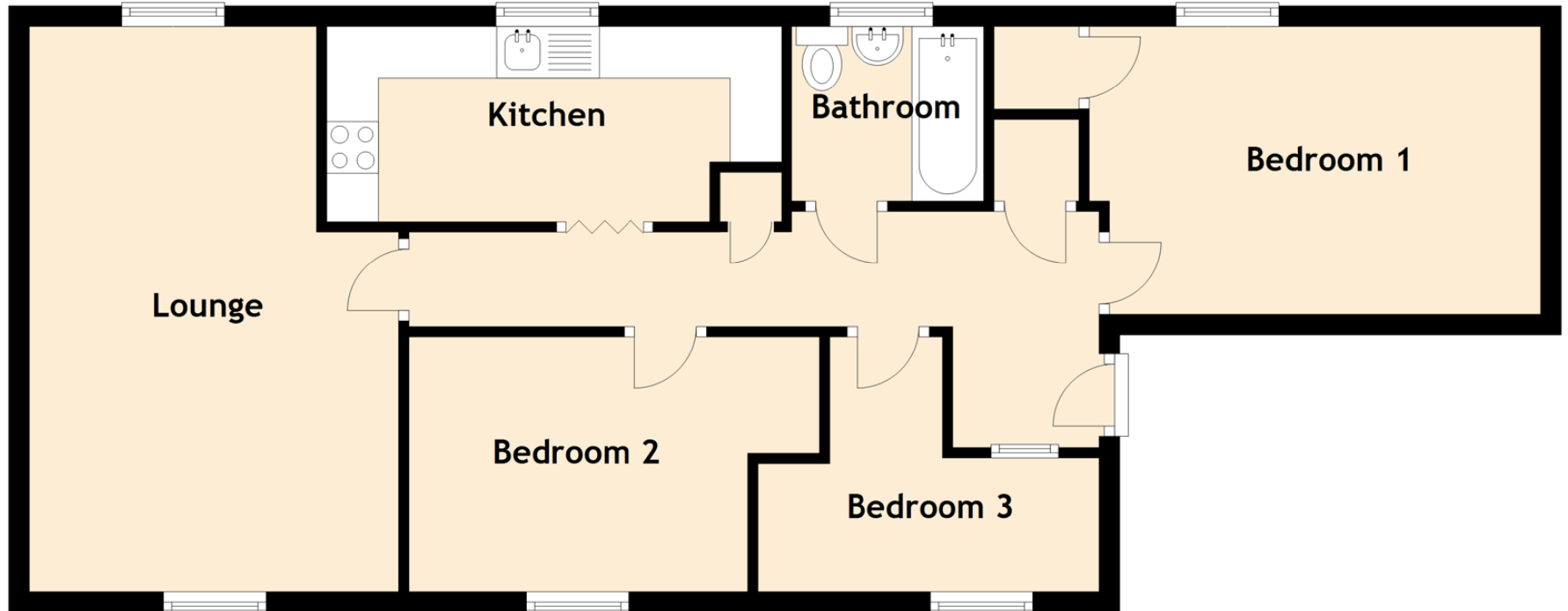


42 Charles Avenue



Approximate Dimensions (Taken from the widest point)

Lounge	5.50m (18'1") x 3.60m (11'10")
Kitchen	4.30m (14'1") x 1.90m (6'3")
Bedroom 1	4.40m (14'5") x 2.80m (9'2")
Bedroom 2	4.00m (13'1") x 2.60m (8'6")
Bedroom 3	3.30m (10'10") x 2.60m (8'6")
Bathroom	2.00m (6'7") x 1.70m (5'7")