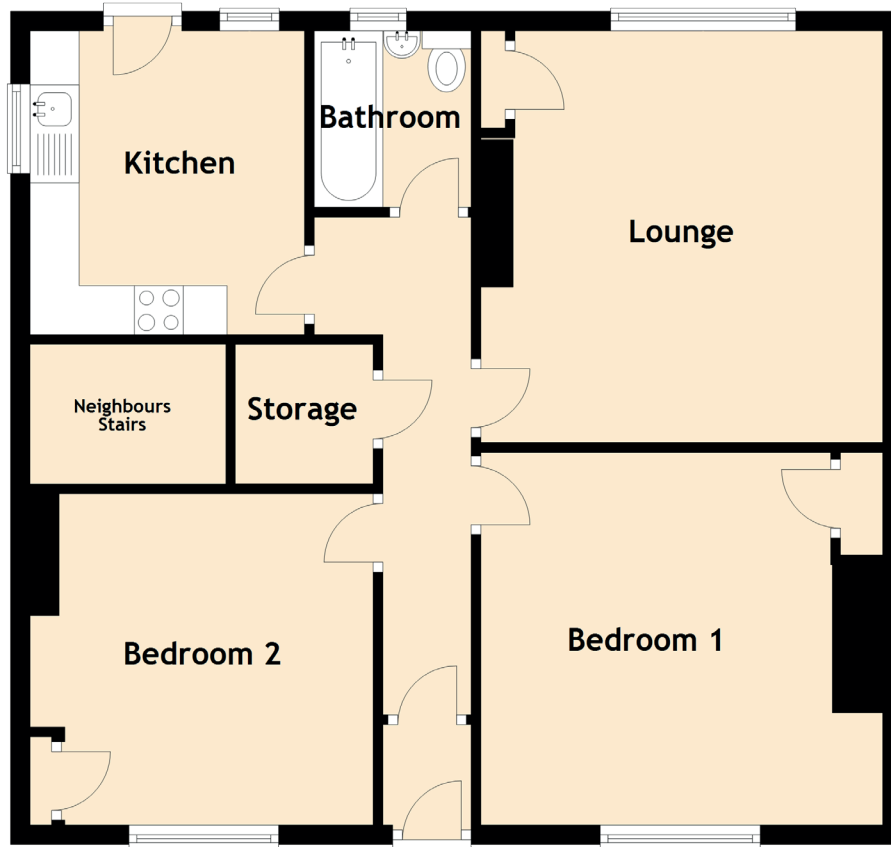


# 27 Blackburn Avenue

DUNFERMLINE, FIFE, KY12 9BQ



Approximate Dimensions (Taken from the widest point)

Lounge	4.20m (13'9") x 4.10m (13'5")
Kitchen	3.10m (10'2") x 2.80m (9'2")
Bedroom 1	4.10m (13'5") x 3.80m (12'6")
Bedroom 2	3.50m (11'6") x 3.38m (11'1")
Bathroom	1.80m (5'11") x 1.60m (5'3")
Storage	1.42m (4'8") x 1.41m (4'7")