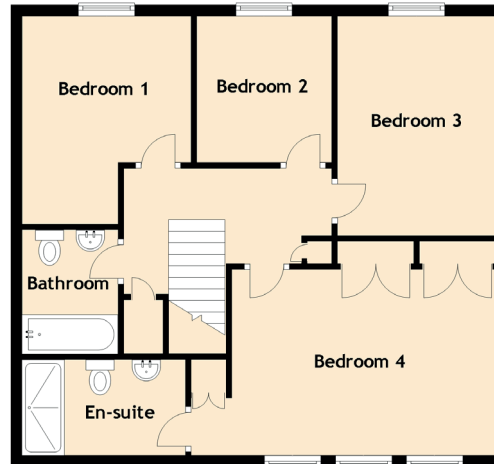
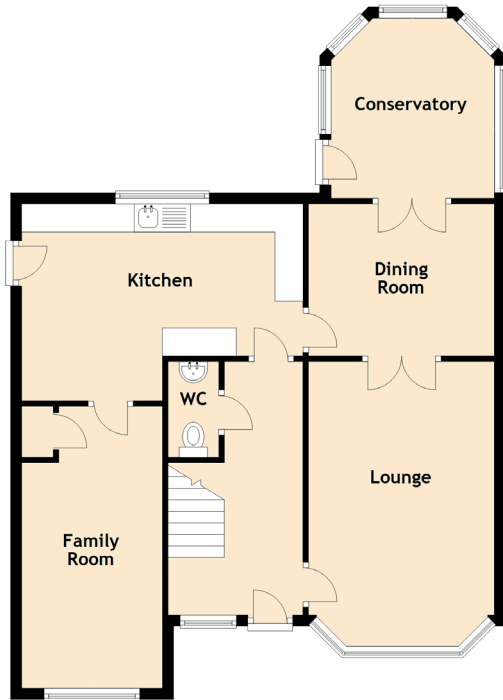


# 46 Gilchrist Way

WISHAW, NORTH LANARKSHIRE, ML2 8JX



Approximate Dimensions (Taken from the widest point)

## Ground Floor

Lounge	4.50m (14'9") x 3.30m (10'10")
Dining Room	3.30m (10'10") x 2.70m (8'10")
Conservatory	2.90m (9'6") x 2.83m (9'3")
Kitchen	5.00m (16'5") x 3.50m (11'6")
Family Room	5.00m (16'5") x 2.30m (7'7")
WC	1.70m (5'7") x 0.90m (2'11")

## First Floor

Bedroom 1	3.70m (12'2") x 2.90m (9'6")
Bedroom 2	2.60m (8'6") x 2.40m (7'10")
Bedroom 3	3.90m (12'10") x 2.80m (9'2")
Bedroom 4	5.40m (17'9") x 3.30m (10'10")
En-suite	2.70m (8'10") x 1.70m (5'7")
Bathroom	2.20m (7'3") x 1.70m (5'7")