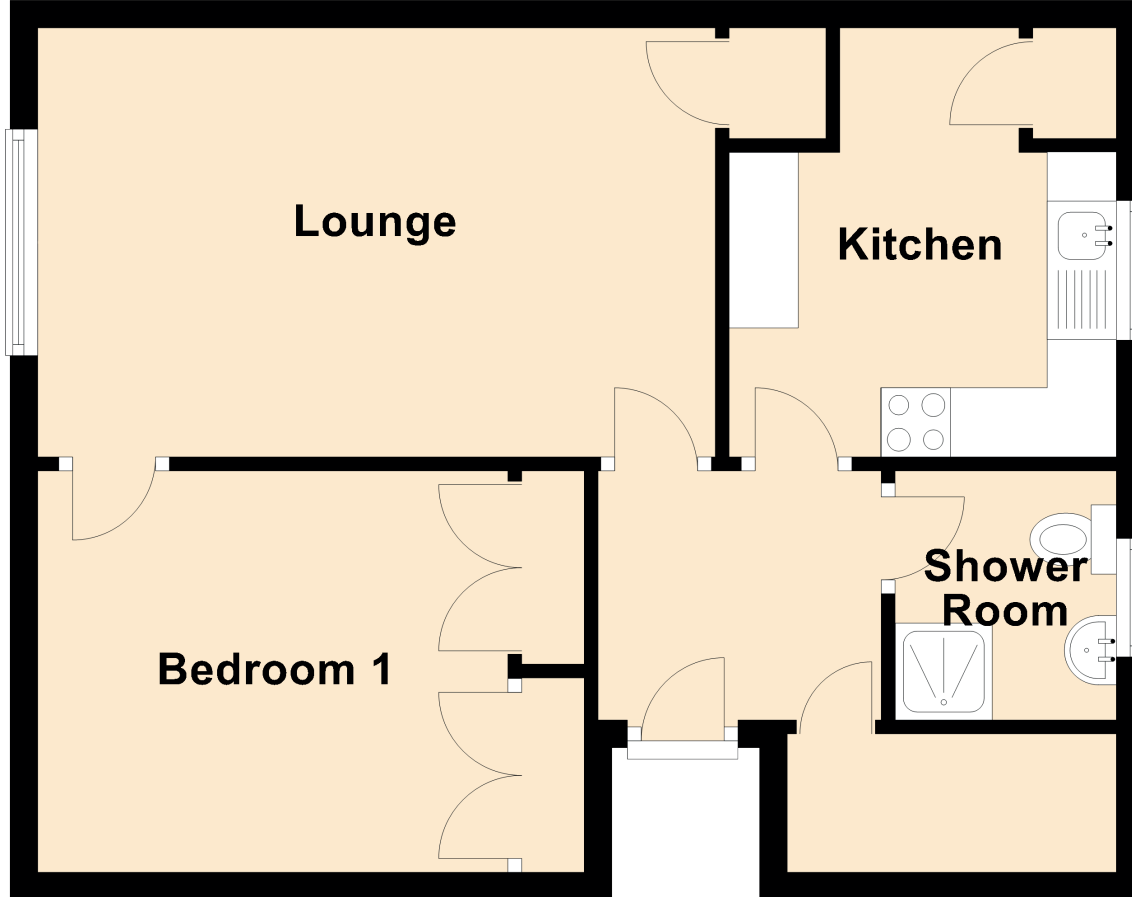


16c Commonside Street

AIRDRIE, ML6 6NN



Approximate Dimensions
(Taken from the widest point)

Lounge	4.90m (16'1") x 3.10m (10'2")
Kitchen	3.10m (10'2") x 2.80m (9'2")
Bedroom 1	3.40m (11'2") x 2.90m (9'6")
Shower Room	1.80m (5'11") x 1.60m (5'3")