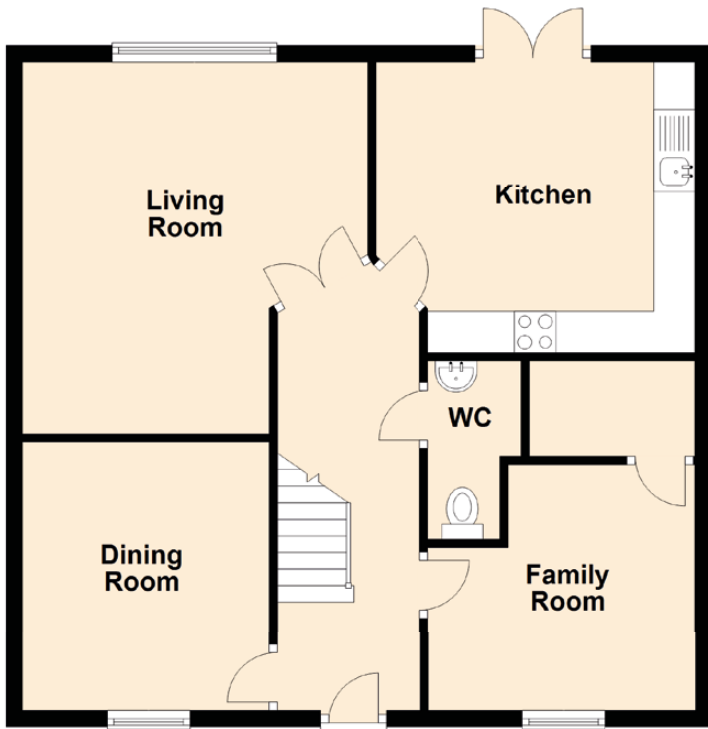


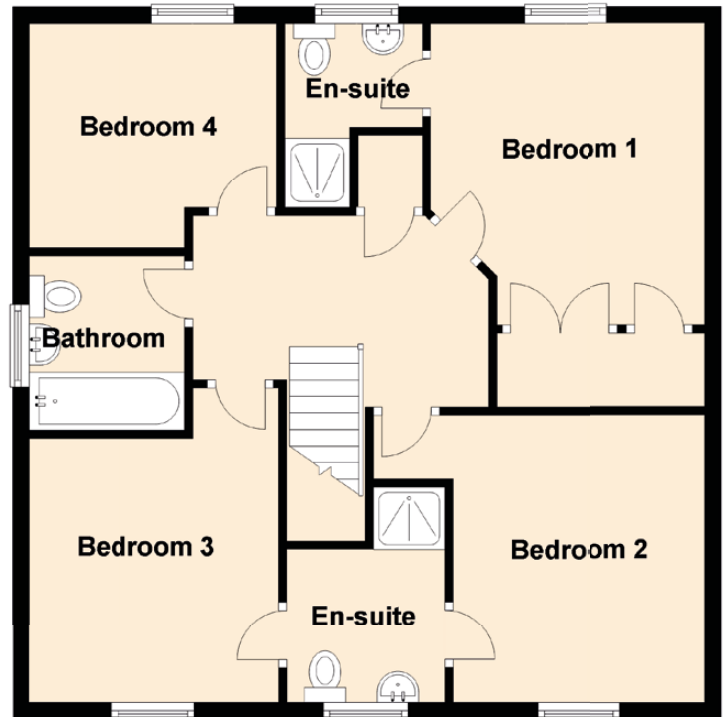
4 Macpherson Avenue

DUNFERMLINE, FIFE, KY11 8XA

Ground Floor



First Floor



Approximate Dimensions (Taken from the widest point)

Kitchen	3.87m (12'8") x 3.52m (11'7")
Living Room	4.50m (14'9") x 4.17m (13'8")
Family Room	3.06m (10') x 2.88m (9'5")
Dining Room	3.25m (10'8") x 2.98m (9'9")
WC	2.15m (7'1") x 1.13m (3'8")
Bedroom 1	3.65m (12') x 3.32m (10'11")
En-suite	2.26m (7'5") x 1.66m (5'5")
Bedroom 2	3.92m (12'10") x 3.48m (11'5")
Bedroom 3	3.02m (9'11") x 2.87m (9'5")
En-suite	2.30m (7'7") x 1.89m (6'2")
Bedroom 4	3.00m (9'10") x 2.72m (8'11")
Bathroom	2.10m (6'11") x 1.89m (6'2")

Gross internal floor area (m2): 130m²