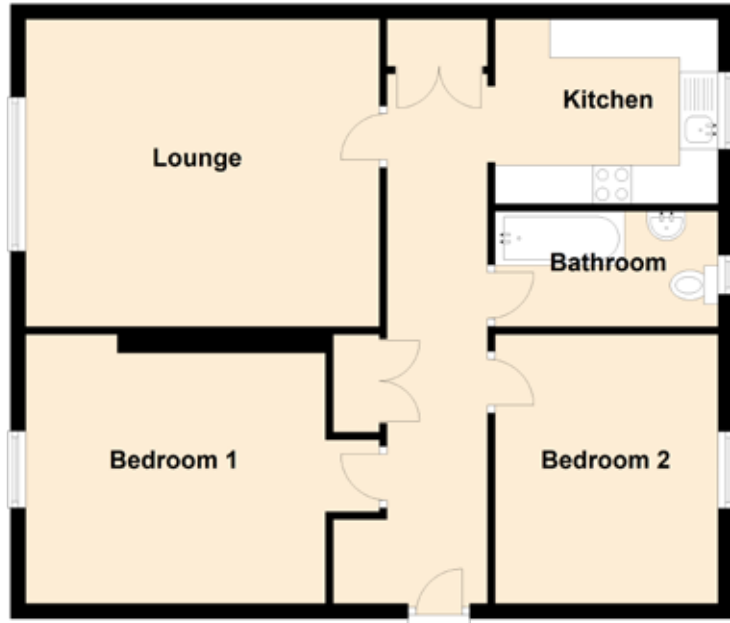


3d Marlee Road

PERTH, PERTHSHIRE, PH1 2HL



Approximate Dimensions (Taken from the widest point)

Lounge	4.60m (15'11") x 4.00m (13'11")
Kitchen	2.90m (9'6") x 2.40m (7'10")
Bedroom 1	3.90m (12'10") x 3.50m (11'6")
Bedroom 2	3.50m (11'6") x 2.90m (9'6")
Bathroom	2.90m (9'6") x 1.50m (4'11")

Gross internal floor area (m²): 67m² | EPC Rating: C

Extras (Included in the sale): Property is sold as seen.