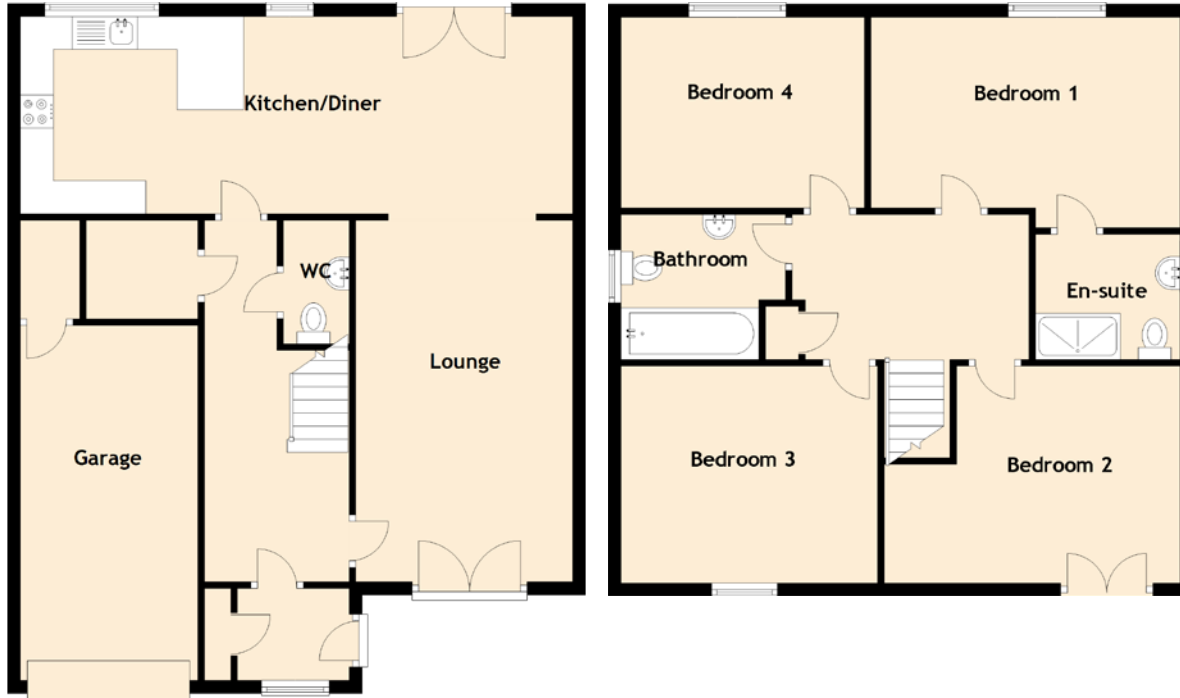


9 Castle View Court

COUSLAND, DALKEITH, MIDLOTHIAN, EH22 2RE



Approximate Dimensions
(Taken from the widest point)

Kitchen/Diner	8.40m (27'7") x 3.00m (9'10")
Lounge	5.50m (18'1") x 3.30m (10'10")
Garage	5.40m (17'9") x 2.70m (8'10")
Bedroom 1	4.70m (15'5") x 3.40m (11'2")
Bedroom 2	4.50m (14'9") x 3.50m (11'6")
Bedroom 3	3.90m (12'10") x 3.30m (10'10")
Bedroom 4	3.70m (12'2") x 2.90m (9'6")
Bathroom	2.50m (8'2") x 2.20m (7'3")
En-suite	2.20m (7'3") x 1.90m (6'3")

Gross internal floor area (m²): 136m²
EPC Rating: D