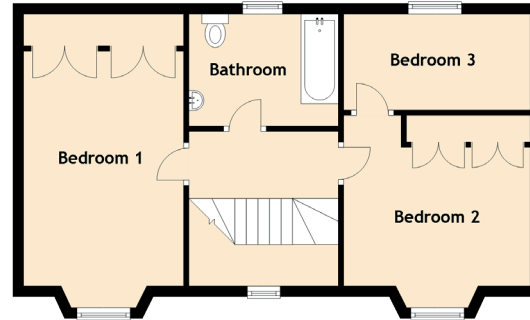
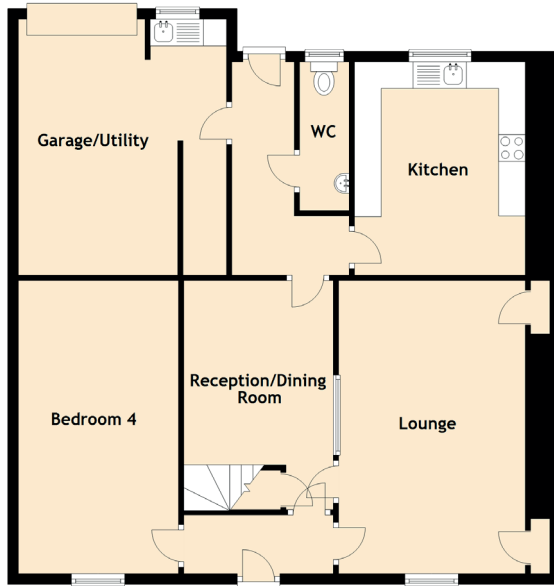


Bay View

HARBOUR ROAD, GARDENSTOWN, BANFF, ABERDEENSHIRE, AB45 3YR



Approximate Dimensions
(Taken from the widest point)

Lounge	5.50m (18'1") x 3.50m (11'6")
Kitchen	4.00m (13'1") x 3.20m (10'6")
Reception/Dining Room	4.30m (14'1") x 2.80m (9'2")
Garage/Utility	4.80m (15'9") x 3.90m (12'10")
Bedroom 1	4.40m (14'5") x 3.00m (9'10")
Bedroom 2	3.50m (11'6") x 3.30m (10'10")
Bedroom 3	3.50m (11'6") x 1.80m (5'11")
Bedroom 4	5.50m (18'1") x 3.00m (9'10")
Bathroom	2.80m (9'2") x 2.10m (6'11")