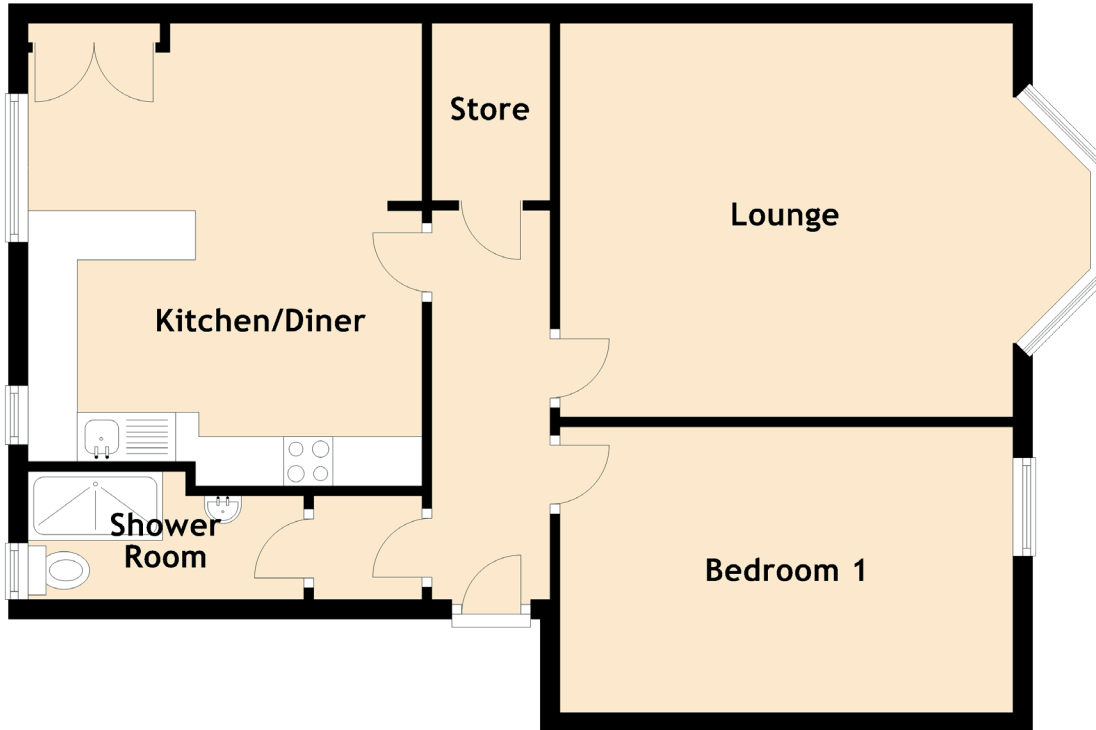


1/1 7 Mavisbank Terrace

PAISLEY, PA1 1TL



Approximate Dimensions
(Taken from the widest point)

Bedroom 1	4.60m (15'1") x 2.90m (9'6")
Lounge	4.60m (15'1") x 4.00m (13'1")
Store	1.80m (5'11") x 1.20m (3'11")
Kitchen/Diner	4.70m (15'5") x 4.00m (13'1")
Shower Room	2.80m (9'2") x 1.30m (4'3")