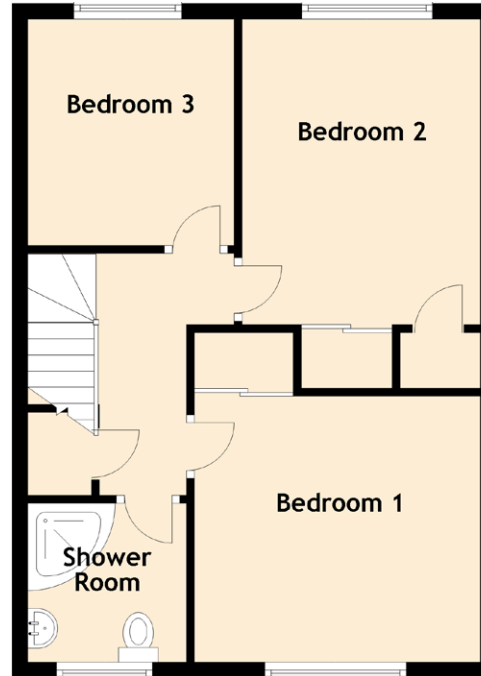
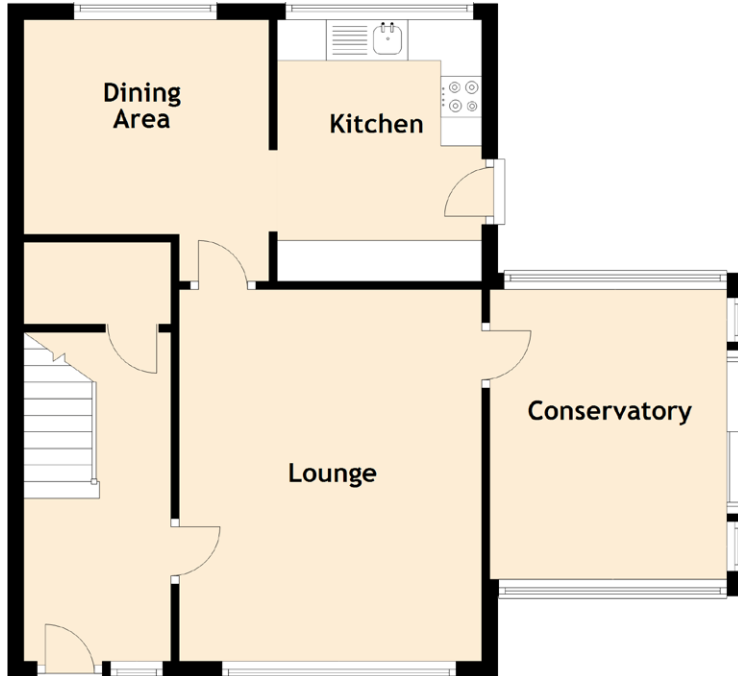


7 Broomknowe Drive

KINCARDINE, FIFE, FK10 4QL



Approximate Dimensions
(Taken from the widest point)

Lounge	5.40m (17'9") x 3.35m (11')
Kitchen	3.55m (11'8") x 2.20m (7'3")
Dining Room	2.45m (8') x 2.45m (8')
Bedroom 1	5.00m (16'5") x 3.05m (10')
Bedroom 2	4.90m (16'1") x 2.30m (7'7")
Bathroom	5.00m (16'5") x 2.15m (7'1")

Gross internal floor area (m²): 99m²

EPC Rating: D