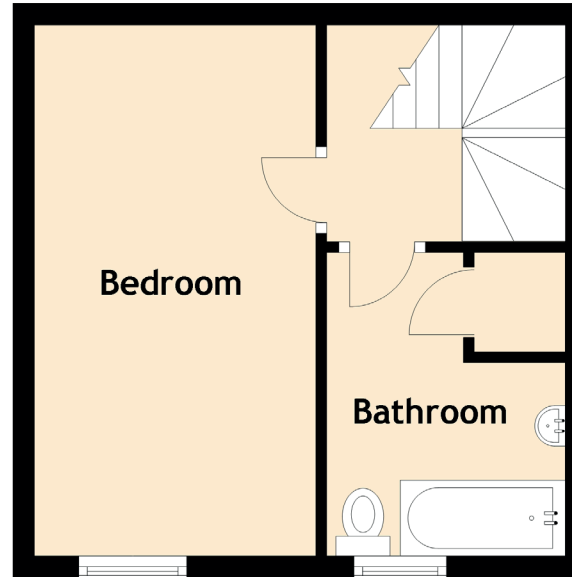
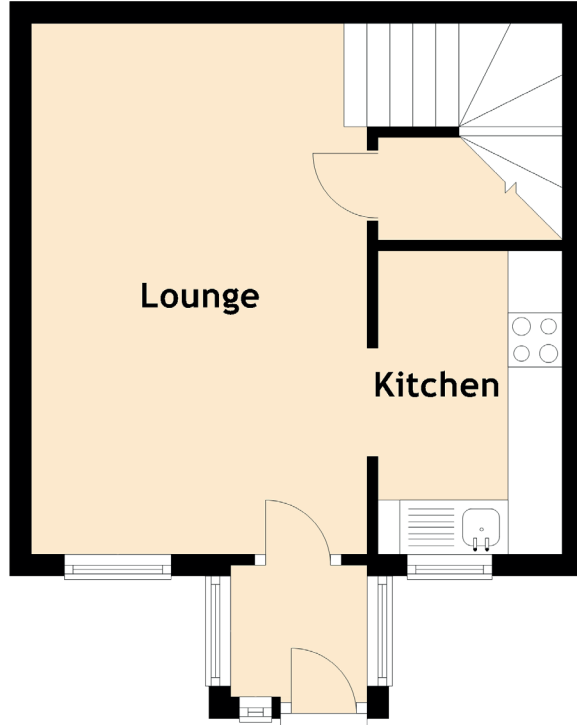


# Specifications & Details

## FLOOR PLAN, DIMENSIONS & MAP



Approximate Dimensions  
(Taken from the widest point)

Lounge	4.90m (16'1") x 2.00m (6'7")
Kitchen	2.80m (9'2") x 1.70m (5'7")
Bedroom	4.90m (16'1") x 2.60m (8'6")
Bathroom	2.90m (9'6") x 2.05m (6'9")

