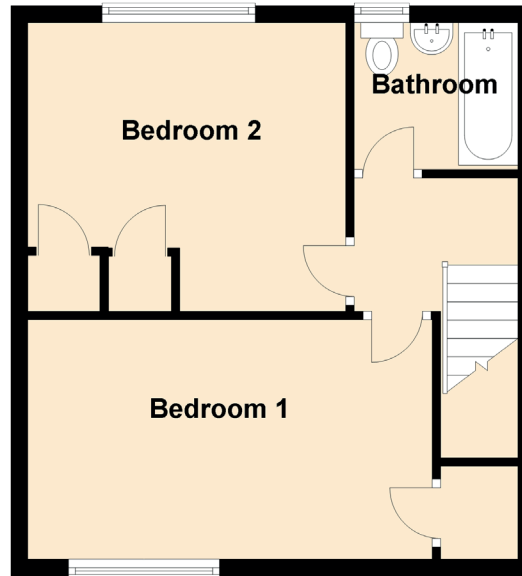
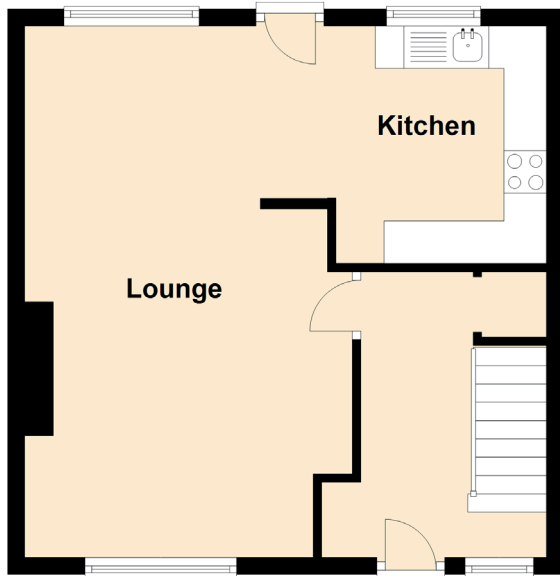


11 Poplar Street

DUNBAR, EAST LoTHIAN, EH42 1PG



Approximate Dimensions
(Taken from the widest point)

Lounge	6.27m (20'7") x 3.32m (10'11")
Kitchen	2.80m (9'2") x 2.48m (8'2")
Bedroom 1	4.77m (15'8") x 2.82m (9'3")
Bedroom 2	3.75m (12'4") x 3.40m (11'2")
Bathroom	1.96m (6'5") x 1.73m (5'8")