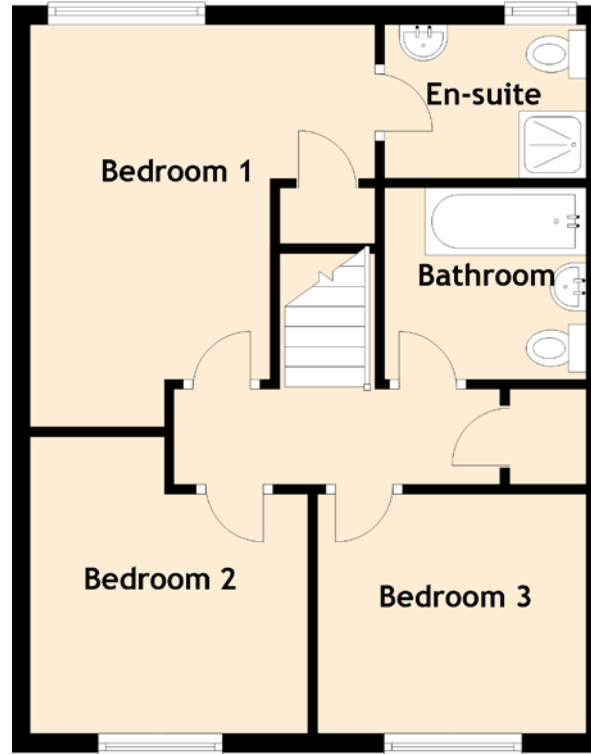
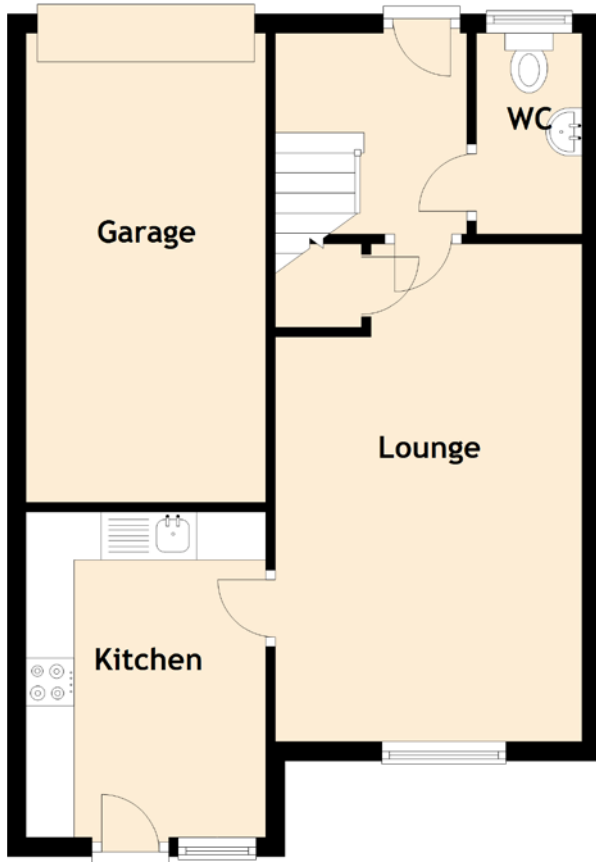


30 Melrose Terrace

DUNDEE, ANGUS, DD3 7QW



Lounge	5.20m (17'1") x 3.20m (10'6")
Kitchen	3.40m (11'2") x 2.50m (8'2")
Bedroom 1	3.70m (12'2") x 3.60m (11'10")
En-suite	2.10m (6'11") x 1.60m (5'3")
Bedroom 2	3.10m (10'2") x 2.90m (9'6")
Bedroom 3	2.80m (9'2") x 2.50m (8'2")
Bathroom	2.10m (6'11") x 2.00m (6'7")
WC	2.10m (6'11") x 1.10m (3'7")
Garage	4.90m (16'1") x 2.40m (7'10")

Gross internal floor area (m²): 76m²

EPC Rating: C