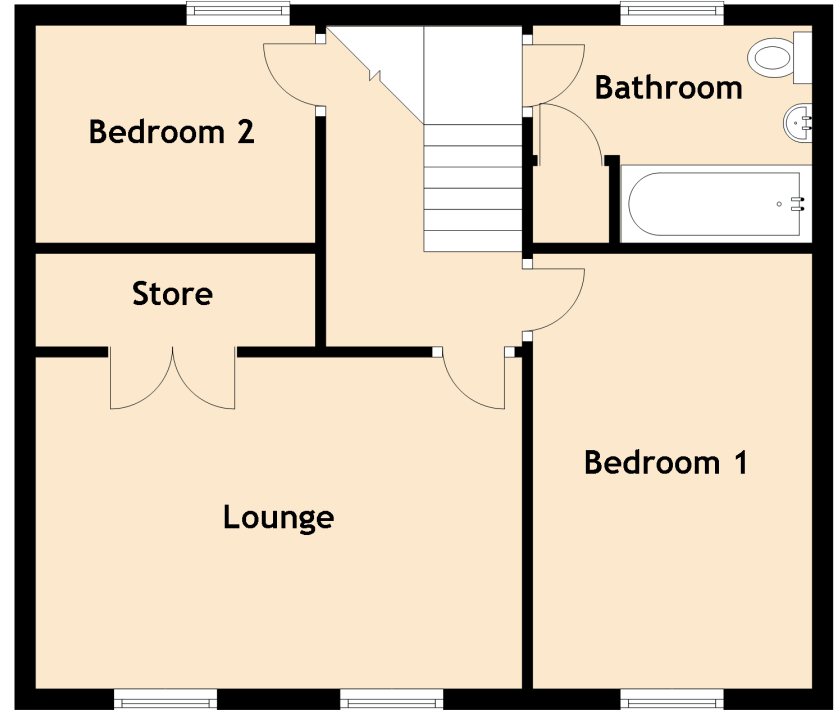
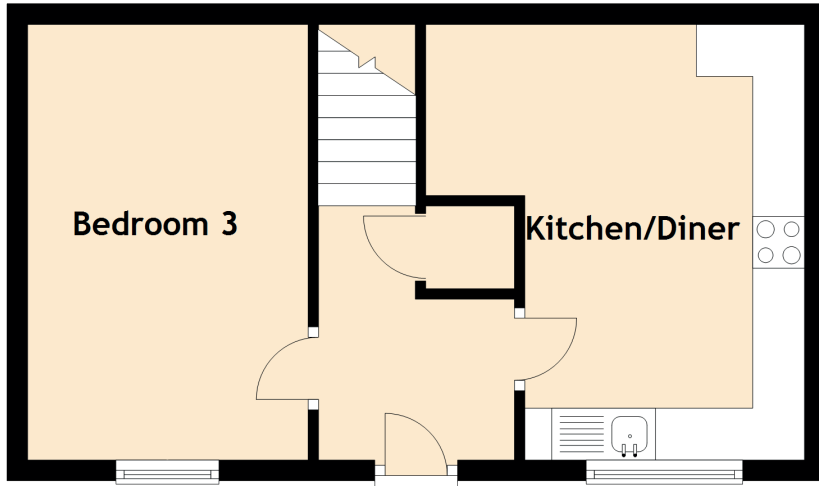


40 Perray Avenue

DUMBARTON, G82 5JG



Approximate Dimensions (Taken from the widest point)

Lounge	4.60m (15'1") x 3.20m (10'6")
Kitchen/Diner	4.20m (13'9") x 3.60m (11'10")
Bedroom 1	4.20m (13'9") x 2.70m (8'10")
Bedroom 2	2.60m (8'6") x 2.10m (6'11")
Bedroom 3	4.20m (13'9") x 2.60m (8'6")
Bathroom	2.70m (8'10") x 2.10m (6'11")