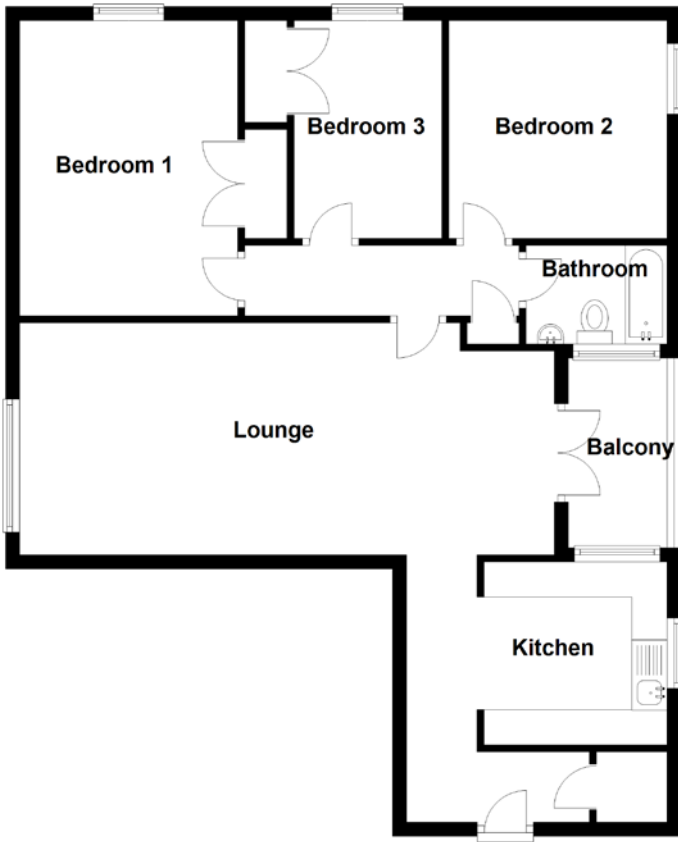


FLOOR PLAN, DIMENSIONS & MAP



Approximate Dimensions
(Taken from the widest point)

| | |
|-----------|---------------------------------|
| Lounge | 7.60m (24'11") x 3.30m (10'10") |
| Kitchen | 2.60m (8'6") x 2.60m (8'6") |
| Balcony | 2.70m (8'10") x 1.40m (4'7") |
| Bedroom 1 | 4.20m (13'9") x 3.10m (10'2") |
| Bedroom 2 | 3.10m (10'2") x 3.10m (10'2") |
| Bedroom 3 | 3.10m (10'2") x 2.10m (6'11") |
| Bathroom | 2.00m (6'7") x 1.40m (4'7") |

Gross internal floor area (m²): 83m²

EPC Rating: D

