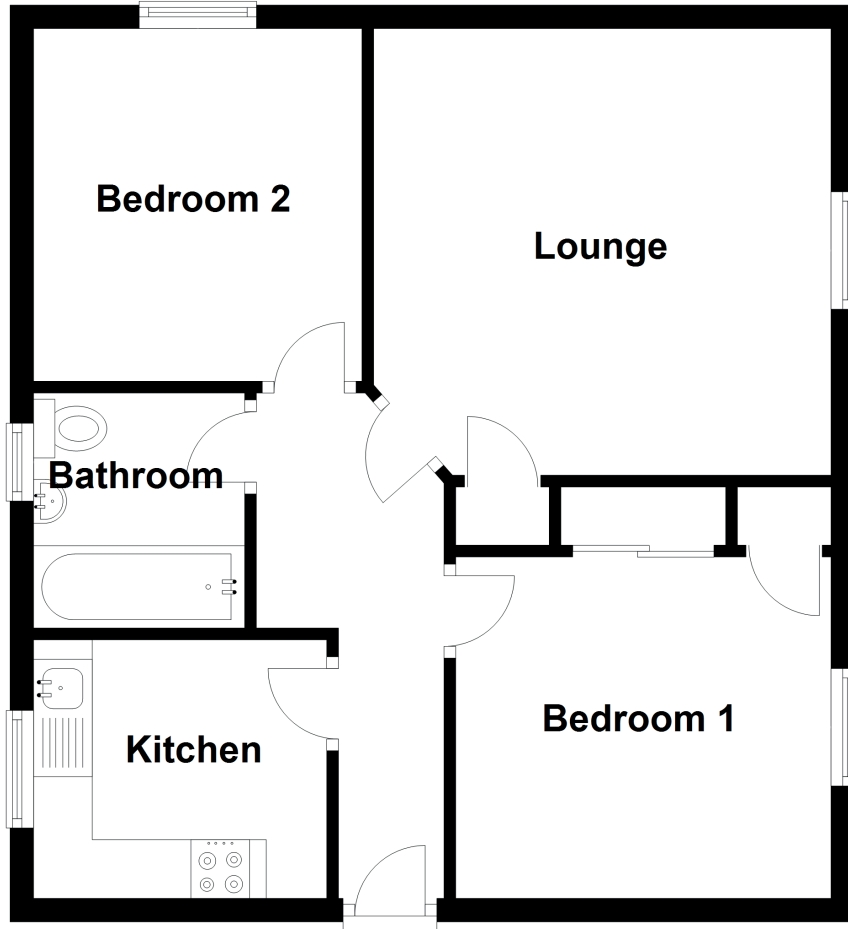


3 Pittendrigh Court

INVERURIE, AB51 3JB



Approximate Dimensions (Taken from the widest point)

Lounge	3.90m (12'10") x 3.80m (12'6")
Kitchen	2.50m (8'2") x 2.20m (7'3")
Bedroom 1	3.20m (10'6") x 2.90m (9'6")
Bedroom 2	3.00m (9'10") x 2.80m (9'2")
Bathroom	2.00m (6'7") x 1.80m (5'11")

Gross internal floor area (m²): 51m² | EPC Rating: D