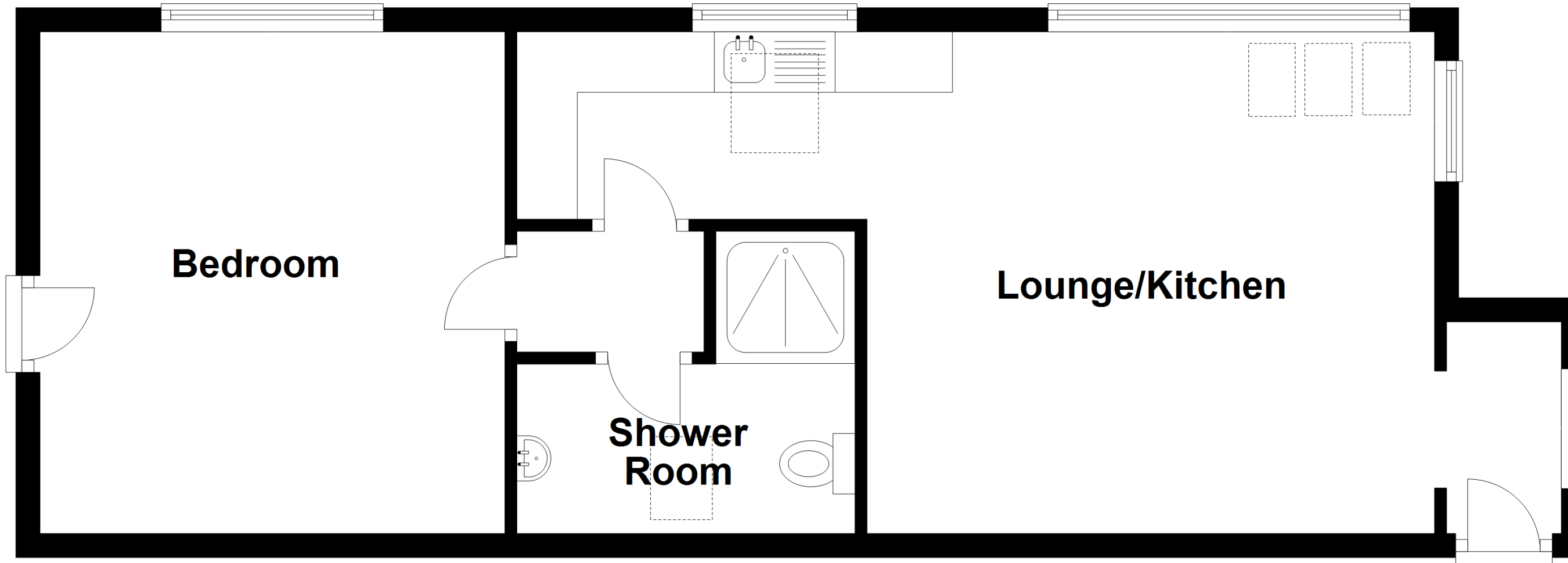


Approximate Dimensions (Taken from the widest point)

Reception Hall	5.10m (16'9") x 3.80m (12'6")
Lounge	5.65m (18'6") x 3.75m (12'4")
Sitting Room	5.20m (17'1") x 3.90m (12'10")
Dining Room	3.90m (12'10") x 2.70m (8'10")
Kitchen/Diner	7.40m (24'3") x 3.00m (9'10")
Utility	2.50m (8'2") x 1.80m (5'11")
Master Bedroom	4.75m (15'7") x 4.30m (14'1")
Shower Room	1.80m (5'11") x 1.60m (5'3")
Bedroom 2	4.35m (14'3") x 3.65m (12')
Bedroom 3	3.00m (9'10") x 2.60m (8'6")
Bedroom 4	3.90m (12'10") x 2.40m (7'10")
Bathroom	2.70m (8'10") x 2.60m (8'6")
Attic Space	13.90m (45'7") x 10.20m (33'6")

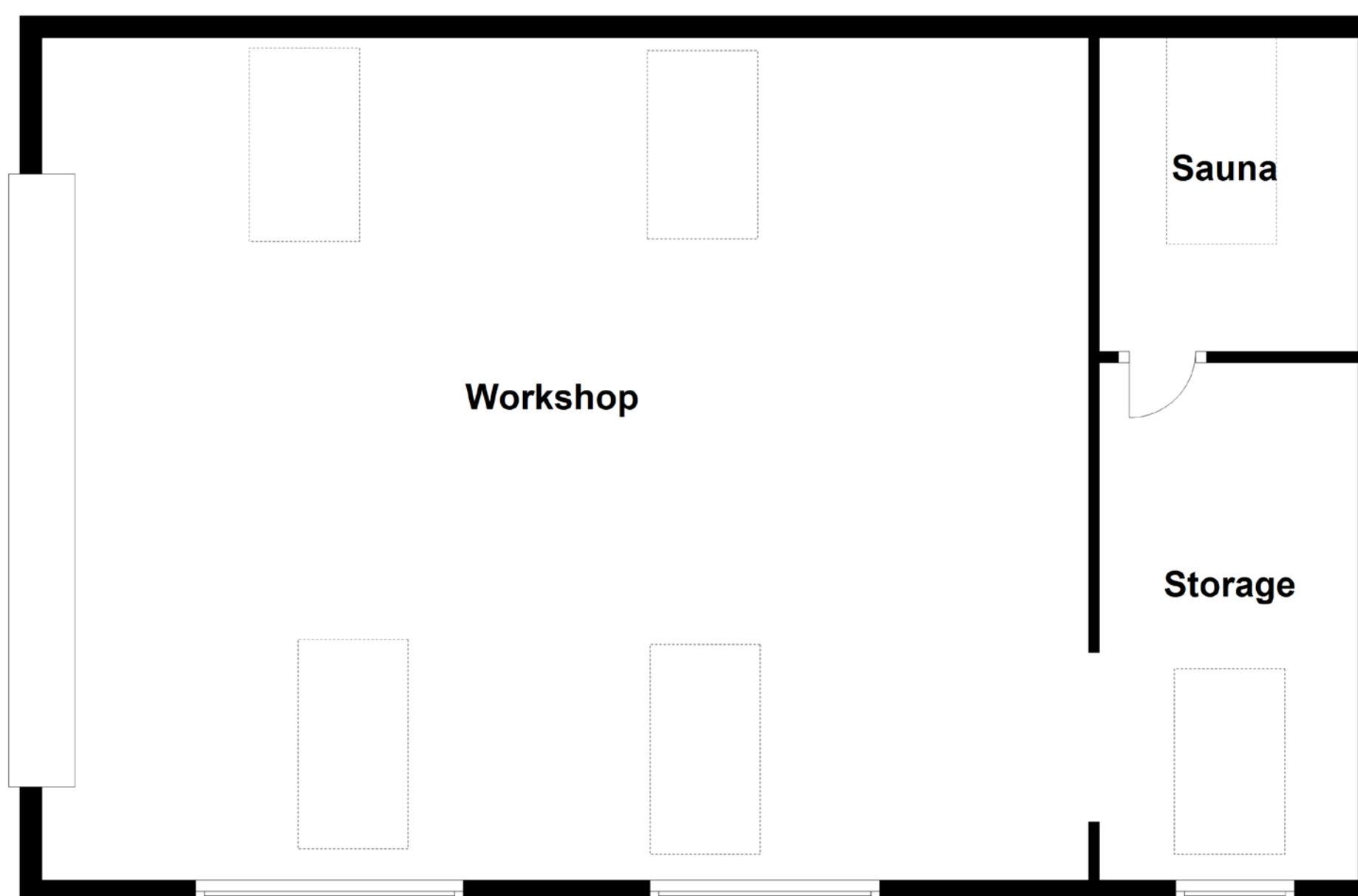
Gross internal floor area (m²): 177m²

EPC Rating: G



Approximate Dimensions
(Taken from the widest point)

Lounge/Kitchen	7.60m (24'11") x 4.20m (13'9")
Bedroom	4.15m (13'7") x 3.85m (12'8")
Shower Room	2.80m (9'2") x 1.40m (4'7")



Approximate Dimensions
(Taken from the widest point)

Workshop	9.50m (31'2") x 7.65m (25'1")
Sauna	2.85m (9'4") x 2.35m (7'9")
Storage	4.40m (14'5") x 2.35m (7'9")