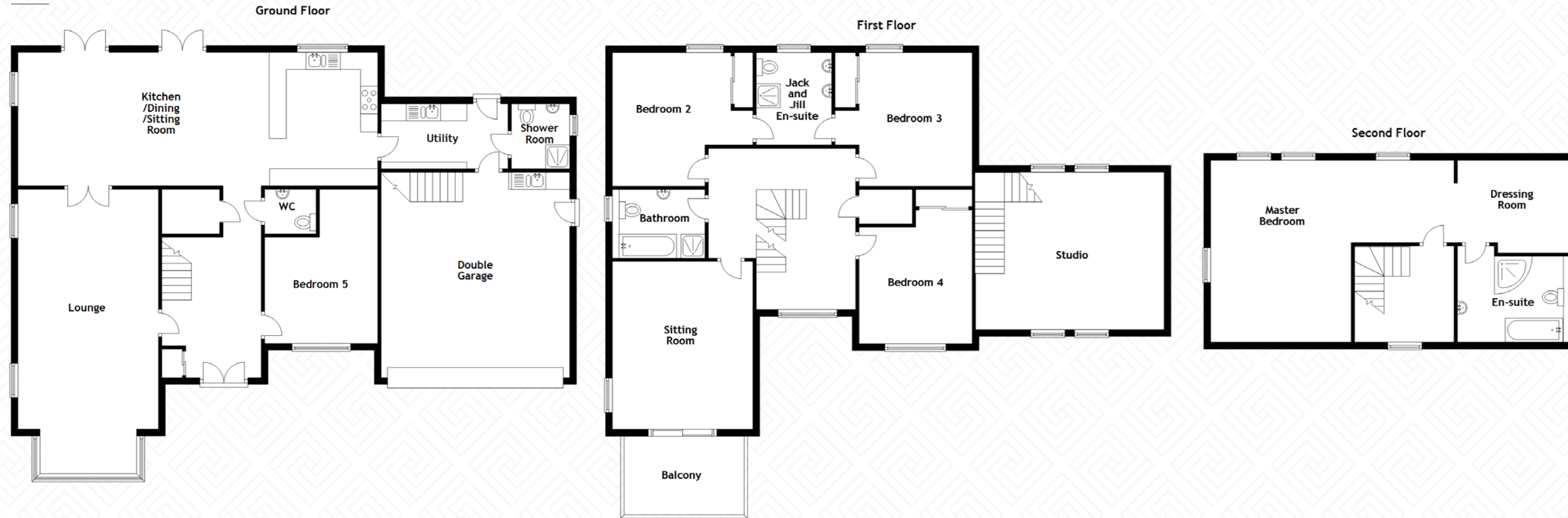


Floor PLANS



The DIMENSIONS

Approximate Dimensions (Taken from the widest point)

Ground Floor	
Lounge	8.30m (27'3") x 4.10m (13'5")
Kitchen/Diner	10.50m (34'5") x 3.90m (12'10")
Utility	3.60m (11'10") x 1.90m (6'3")
Shower Room	1.90m (6'3") x 1.70m (5'7")
Bedroom 6	4.50m (14'9") x 3.30m (10'10")
WC	1.50m (4'11") x 1.30m (4'3")
Double Garage	6.00m (19'8") x 5.50m (18'1")

First Floor	
Bedroom 2	4.90m (16'1") x 4.00m (13'1")
Bedroom 3	4.00m (13'1") x 3.90m (12'10")
Jack and Jill En-suite	2.70m (8'10") x 2.20m (7'3")
Bedroom 4	4.00m (13'1") x 3.90m (12'10")
Bedroom 5	3.40m (11'2") x 3.30m (10'10")
Bathroom	2.70m (8'10") x 2.00m (6'7")
Studio	5.50m (18'1") x 5.10m (16'9")

First Floor	
Master Bedroom	7.00m (23') x 5.30m (17'5")
Dressing Room	3.40m (11'2") x 2.40m (7'10")
En-suite	3.40m (11'2") x 2.90m (9'6")

Gross internal floor area (m²): 302m²

EPC Rating: B