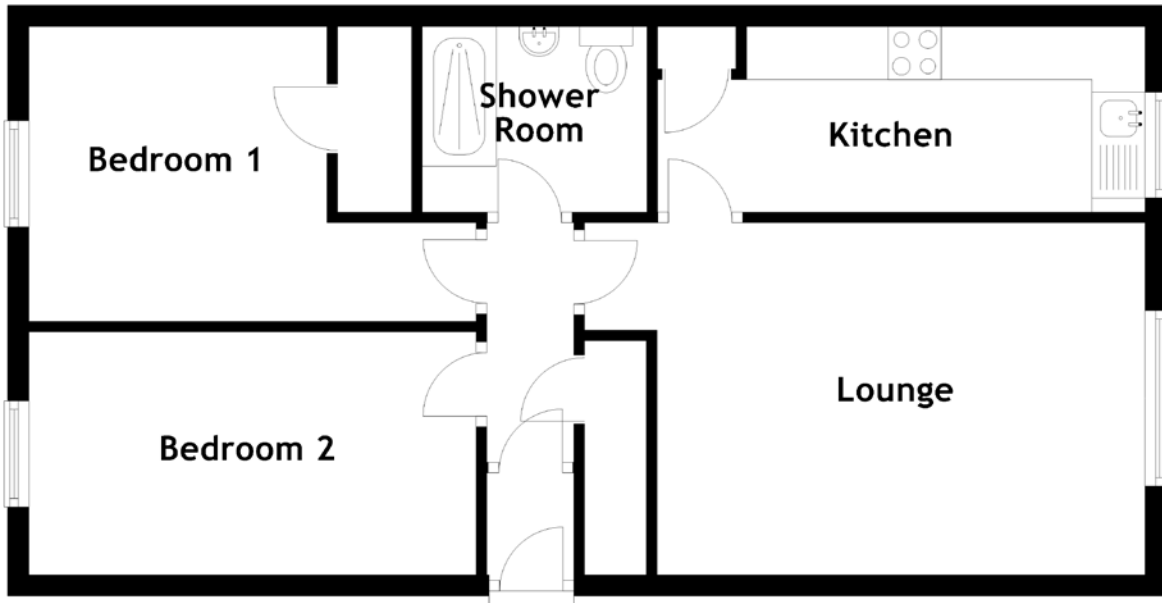


FLOOR PLAN, DIMENSIONS & MAP



Approximate Dimensions (Taken from the widest point)

Lounge 5.29m (17'4") x 3.32m (10'11")
 Kitchen 4.60m (15'1") x 1.75m (5'9")
 Bedroom 1 4.22m (13'10") x 2.78m (9'1")

Bedroom 2 4.22m (13'10") x 2.34m (7'8")
 Shower Room 2.12m (6'11") x 1.75m (5'9")

Gross internal floor area (m²): 56m²
 EPC Rating: C

