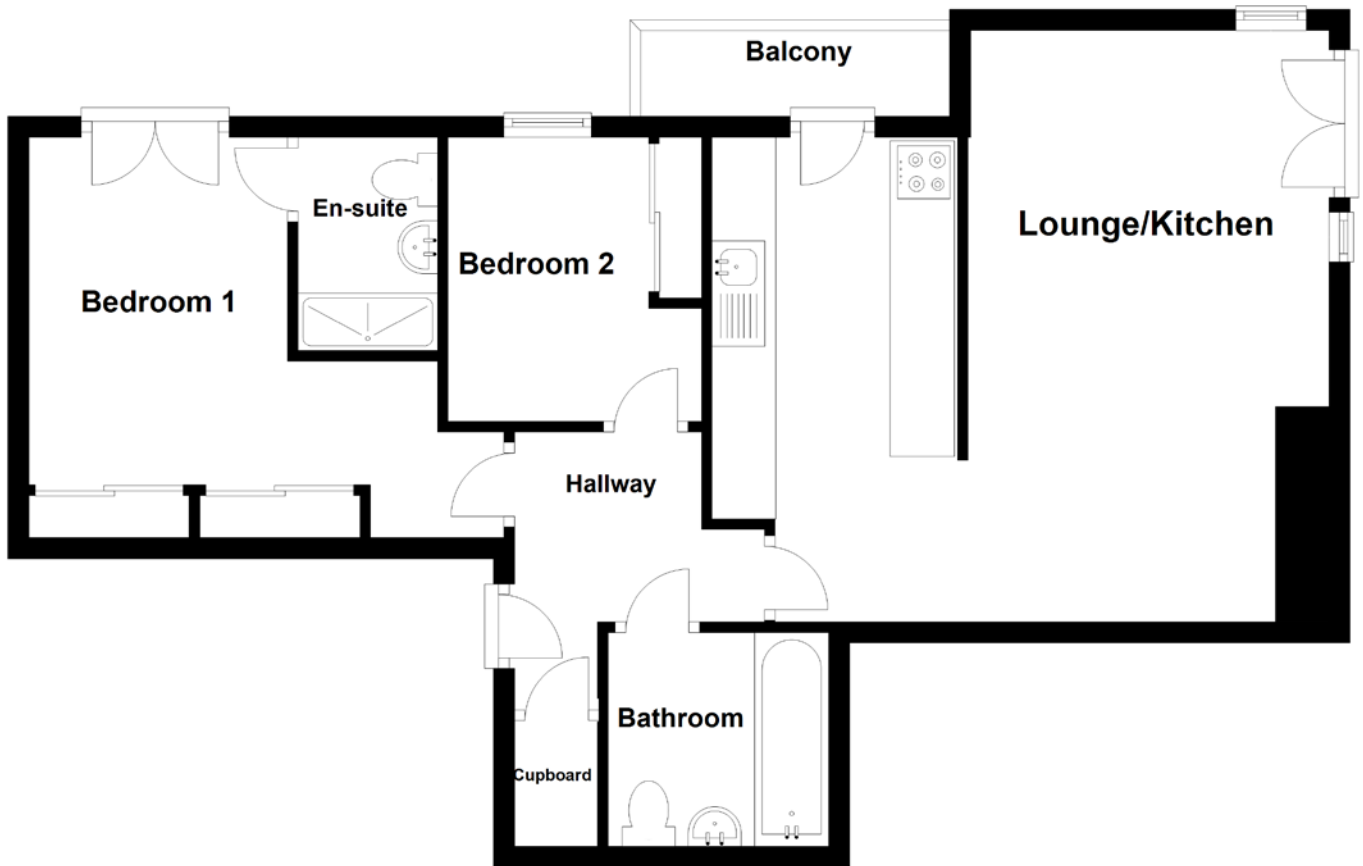


FLOOR PLAN, DIMENSIONS & MAP



Approximate Dimensions (Taken from the widest point)

Lounge/Kitchen	5.60m (18'5") x 4.45m (14'7")
Balcony	3.03m (9'11") x 1.00m (3'3")
Bedroom 1	4.50m (14'9") x 3.16m (10'5")
En-suite	2.02m (6'8") x 1.32m (4'4")
Bedroom 2	2.69m (8'10") x 2.40m (7'11")

Bathroom

2.09m (6'10") x 1.87m (6'2")

Gross internal floor area (m²): 61m²
EPC Rating: B

Extras (Included in the sale): Furniture may be available through separate negotiation.

