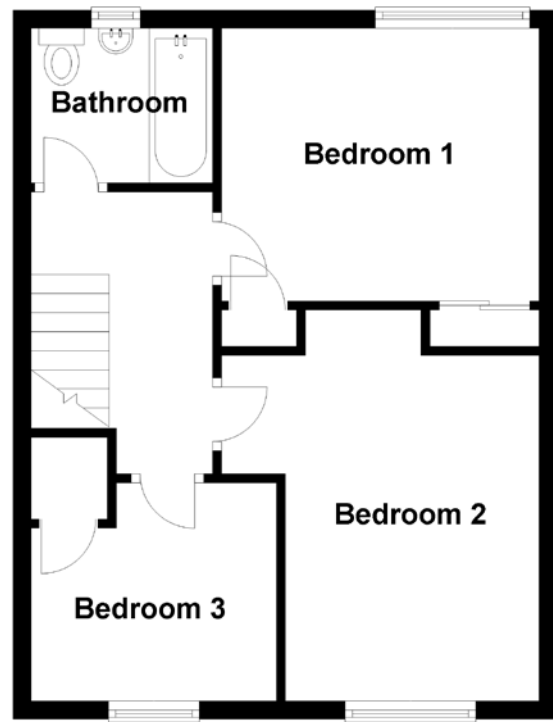
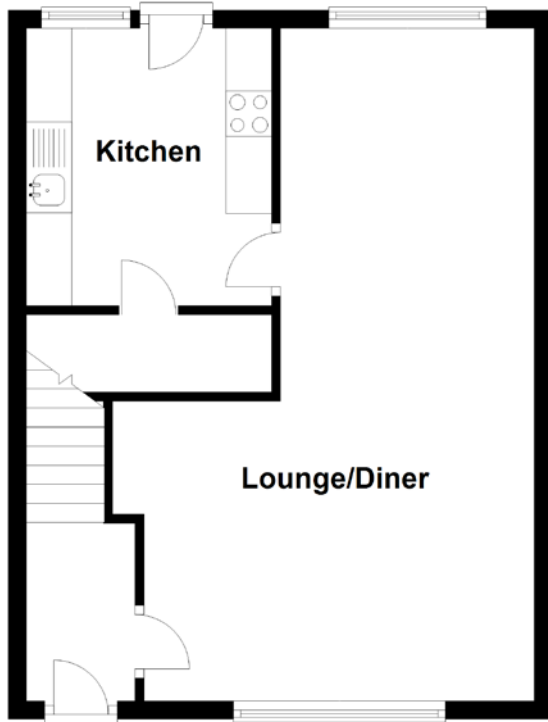


FLOOR PLAN, DIMENSIONS & MAP



Approximate Dimensions (Taken from the widest point)

Lounge/Diner	7.40m (24'3") x 4.30m (14'1")
Kitchen	3.05m (10') x 2.70m (8'10")
Bedroom 1	3.50m (11'6") x 3.00m (9'10")
Bedroom 2	4.30m (14'1") x 3.50m (11'6")
Bedroom 3	2.70m (8'10") x 2.40m (7'10")

Bathroom

2.00m (6'7") x 1.70m (5'7")

Gross internal floor area (m²): 81m²

EPC Rating: D

Extras (Included in the sale): Carpets and floor coverings, light fixtures and fittings.

