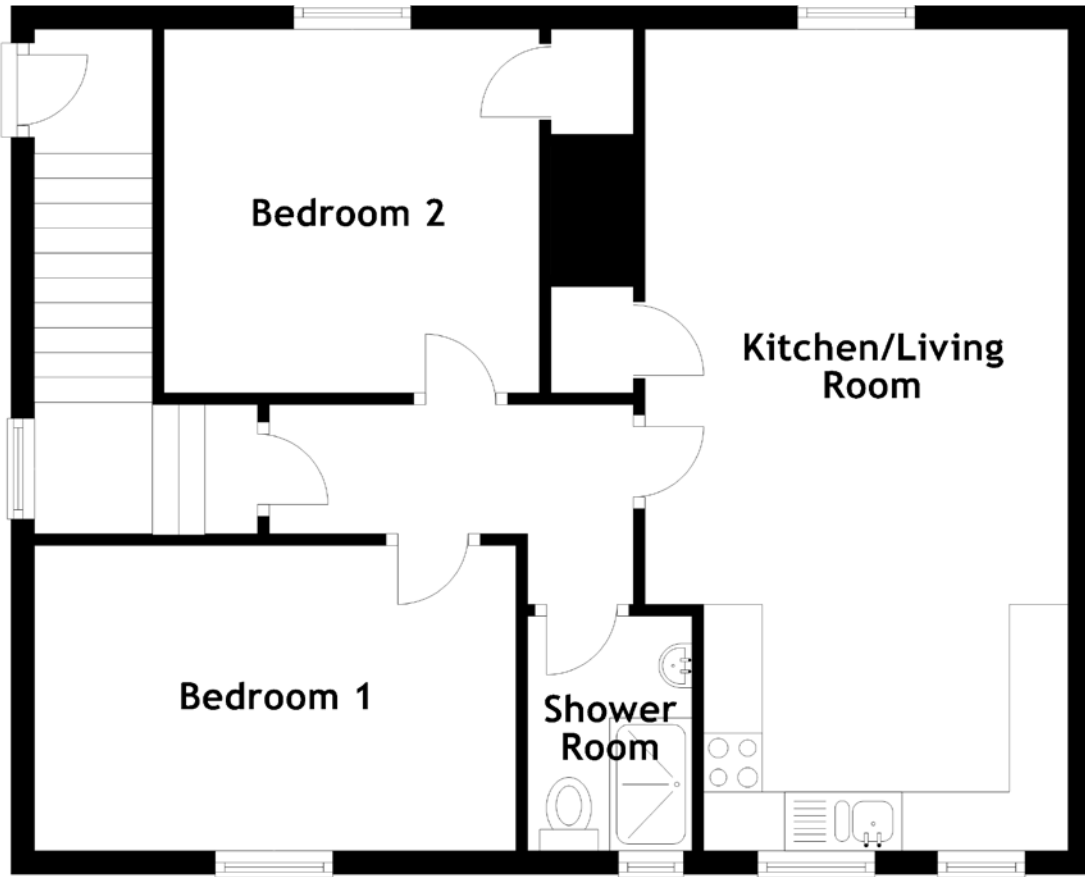


# FLOOR PLAN, DIMENSIONS & MAP



Approximate Dimensions (Taken from the widest point)

Kitchen/Living Room      7.00m (23') x 3.70m (12'2")  
 Shower Room              2.00m (6'7") x 1.40m (4'7")  
 Bedroom 2                  3.20m (10'6") x 3.10m (10'2")

Bedroom 1

4.10m (13'5") x 2.60m (8'6")

Gross internal floor area (m<sup>2</sup>): 64m<sup>2</sup>

EPC Rating: C

