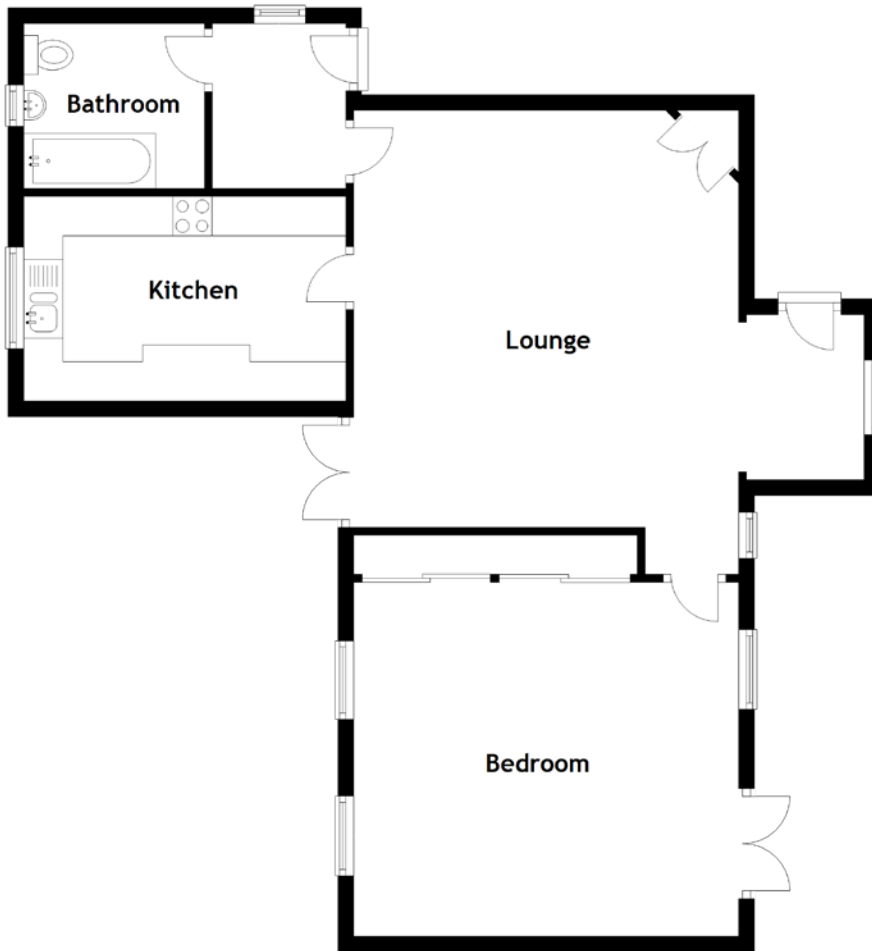


FLOOR PLAN, DIMENSIONS & MAP



Approximate Dimensions
(Taken from the widest point)

Lounge 5.90m (19'4") x 4.90m (16'1")
Kitchen 4.20m (13'9") x 2.60m (8'6")

Bedroom 4.90m (16'1") x 4.50m (14'9")
Bathroom 2.30m (7'7") x 2.10m (6'11")

Gross internal floor area (m²): 76m²
EPC Rating: TBC

