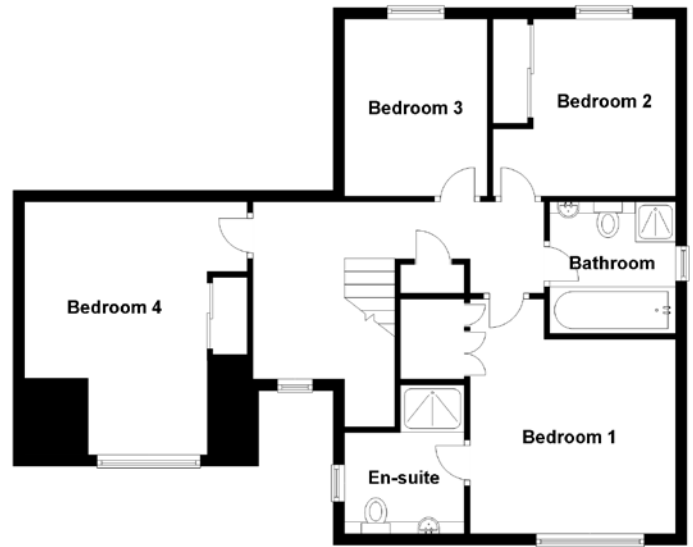
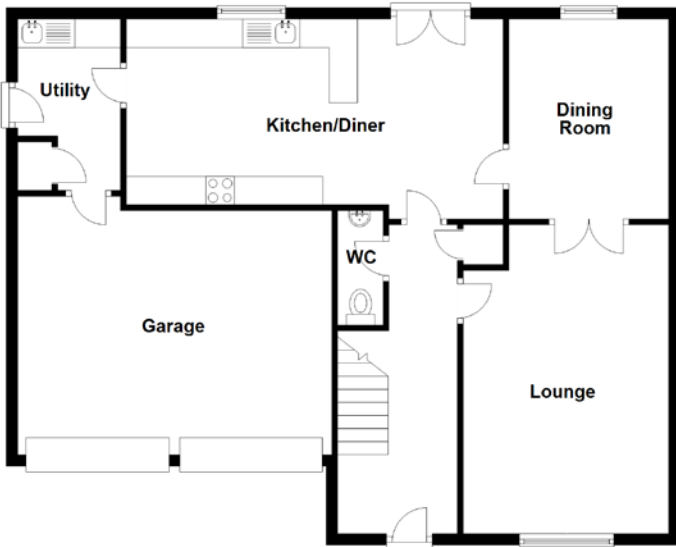


FLOOR PLAN, DIMENSIONS & MAP



Approximate Dimensions
(Taken from the widest point)

Lounge	5.40m (17'9") x 3.60m (11'10")
Dining Room	3.50m (11'6") x 2.80m (9'2")
Kitchen/Diner	6.60m (21'8") x 3.50m (11'6")
Utility	3.00m (9'10") x 1.80m (5'11")
WC	2.00m (6'7") x 0.80m (2'7")
Bedroom 1	4.10m (13'5") x 3.60m (11'10")
En-suite	2.60m (8'6") x 2.10m (6'11")

Bedroom 2	3.20m (10'6") x 3.10m (10'2")
Bedroom 3	3.10m (10'2") x 2.50m (8'2")
Bedroom 4	4.20m (13'9") x 4.00m (13'1")
Bathroom	2.30m (7'7") x 2.20m (7'3")

Gross internal floor area (m²): 137m²
EPC Rating: C

Extras (Included in the sale): All fitted floor coverings, light fittings, curtains and blinds.

