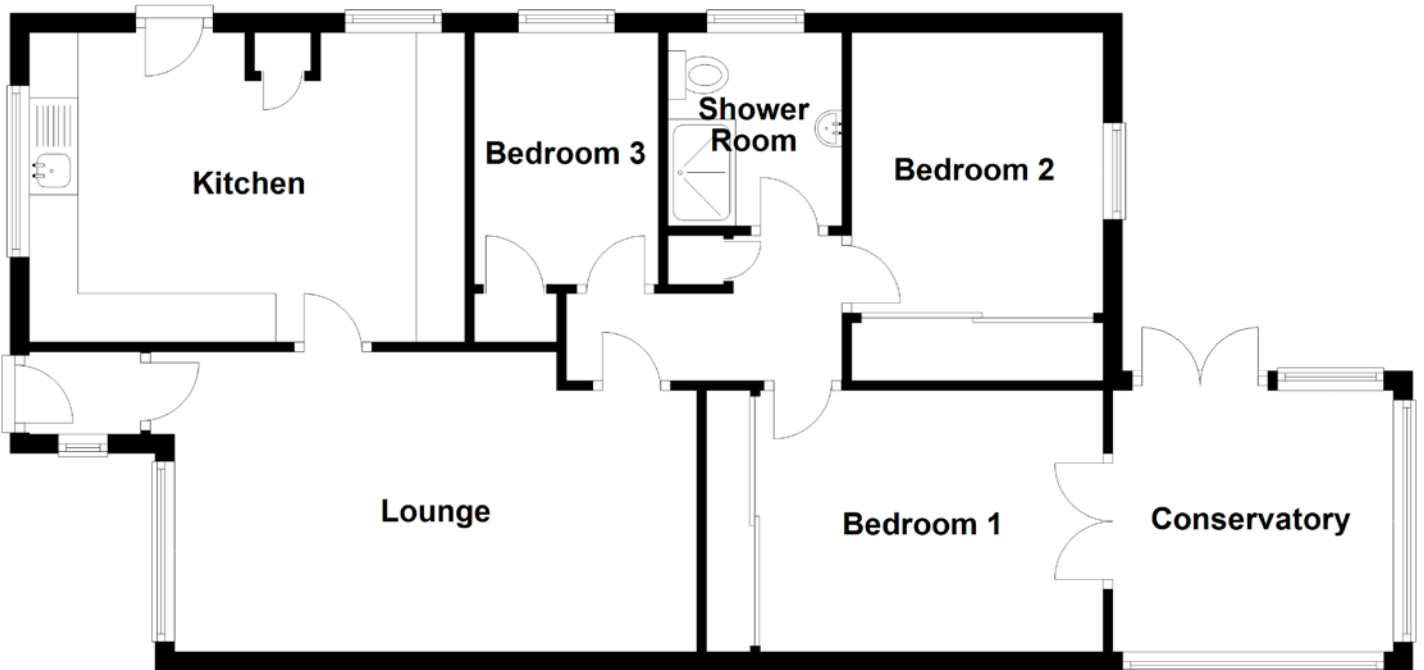


# FLOOR PLAN, DIMENSIONS & MAP



Approximate Dimensions (Taken from the widest point)

Kitchen 4.50m (14'9") x 3.20m (10'6")  
Lounge 5.55m (18'3") x 3.10m (10'2")  
Bedroom 1 4.10m (13'5") x 2.70m (8'10")  
Bedroom 2 2.90m (9'6") x 2.60m (8'6")

Bedroom 3 2.60m (8'6") x 1.90m (6'3")  
Shower Room 2.00m (6'7") x 1.80m (5'11")  
Conservatory 2.90m (9'6") x 2.70m (8'10")

Gross internal floor area (m<sup>2</sup>): 75m<sup>2</sup>  
EPC Rating: C

