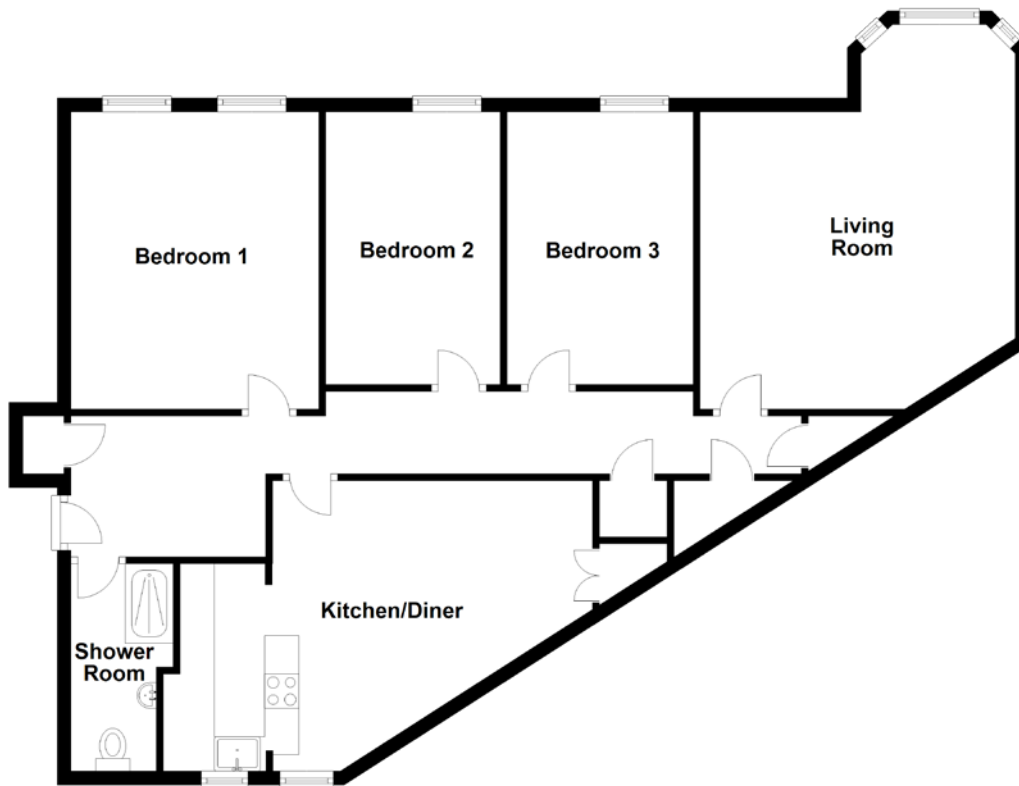


FLOOR PLAN, DIMENSIONS & MAP



Approximate Dimensions
(Taken from the widest point)

Living Room 5.60m (18'5") x 4.59m (15'1")
 Kitchen/Diner 6.25m (20'6") x 4.23m (13'10")
 Bedroom 1 4.35m (14'3") x 3.61m (11'10")

Bedroom 2 3.97m (13') x 2.54m (8'4")
 Bedroom 3 3.97m (13') x 2.71m (8'11")
 Shower Room 3.02m (9'11") x 1.49m (4'11")

Gross internal floor area (m²): TBCm²
 EPC Rating: TBC

