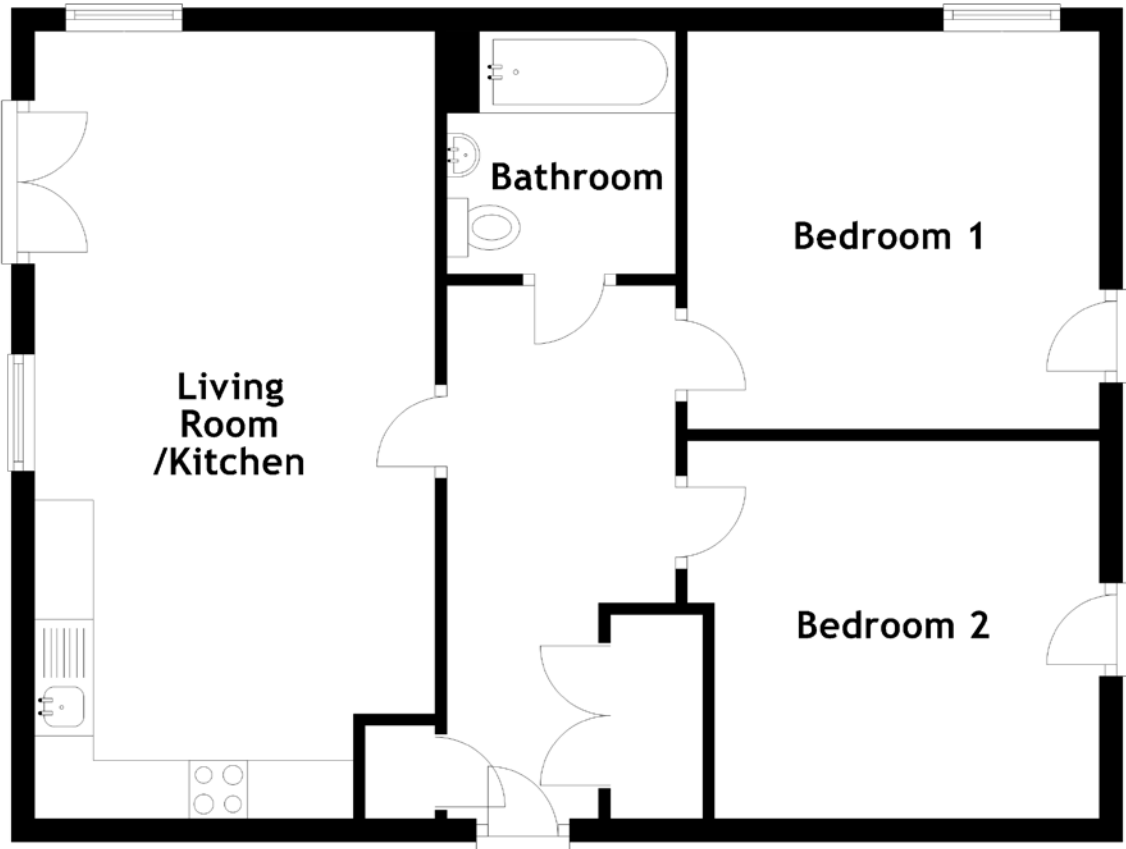


FLOOR PLAN, DIMENSIONS & MAP



Approximate Dimensions
(Taken from the widest point)

Living Room/Kitchen 6.96m (22'10") x 3.43m (11'3")
Bedroom 1 3.53m (11'7") x 3.41m (11'2")

Bedroom 2 3.53m (11'7") x 3.24m (10'8")
Bathroom 2.08m (6'10") x 1.96m (6'5")

Gross internal floor area (m²): 64m²
EPC Rating: B

[VIRTUAL TOUR](#)

