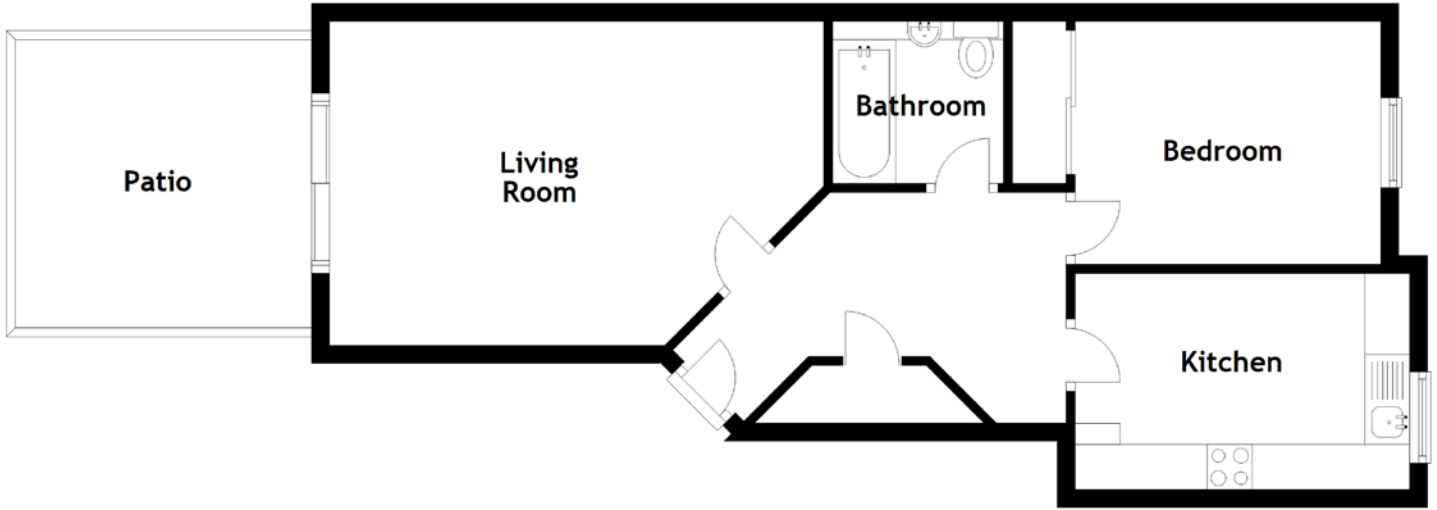


FLOOR PLAN, DIMENSIONS & MAP



Approximate Dimensions (Taken from the widest point)

Living Room 5.50m (18'1") x 3.60m (11'10")
 Kitchen 4.40m (14'5") x 2.40m (7'10")
 Bedroom 3.40m (11'2") x 2.70m (8'10")

Bathroom
 Patio

1.90m (6'3") x 1.80m (5'11")
 3.30m (10'10") x 3.20m (10'6")

Gross internal floor area (m²): 49m²
 EPC Rating: D

