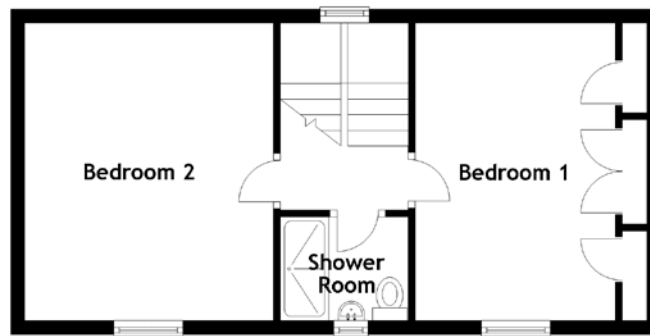
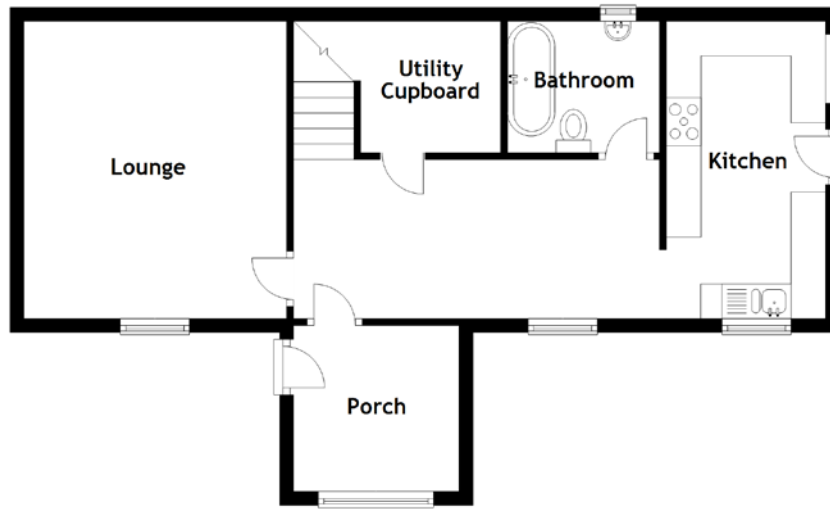


# FLOOR PLAN, DIMENSIONS & MAP



Approximate Dimensions (Taken from the widest point)

Porch	2.40m (7'10") x 2.40m (7'10")
Lounge	4.30m (14'1") x 3.80m (12'6")
Kitchen	4.30m (14'1") x 2.30m (7'7")
Bathroom	2.20m (7'3") x 1.90m (6'3")

Bedroom 1	4.30m (14'1") x 2.90m (9'6")
Bedroom 2	4.30m (14'1") x 3.60m (11'10")
Shower Room	2.20m (7'3") x 1.50m (4'11")

Gross internal floor area (m<sup>2</sup>): 88m<sup>2</sup>  
EPC Rating: F

