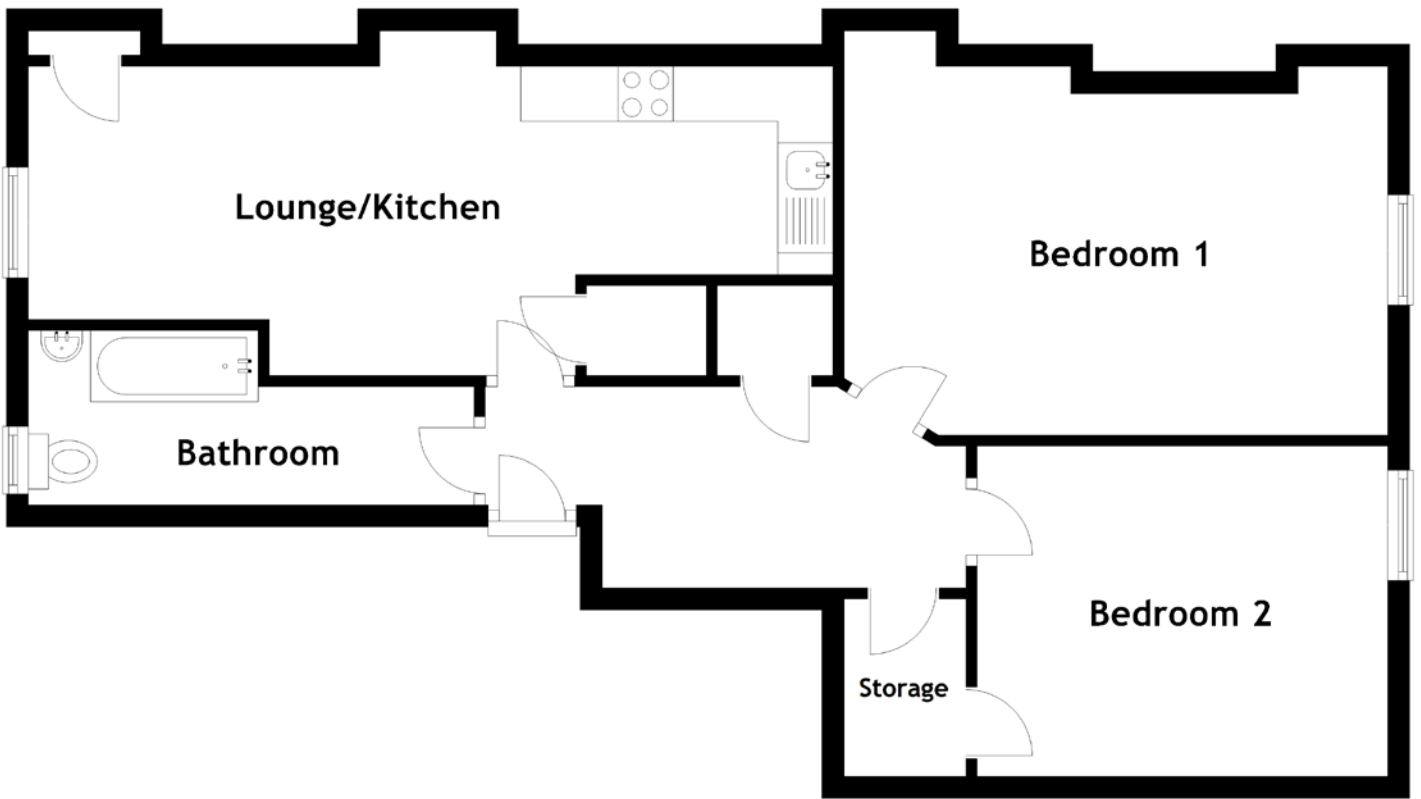


FLOOR PLAN, DIMENSIONS & MAP



Approximate Dimensions (Taken from the widest point)

Lounge/Kitchen 7.31m (24') x 3.48m (11'5")
Bedroom 1 4.94m (16'2") x 3.35m (11')
Bedroom 2 3.73m (12'3") x 3.00m (9'10")

Storage 1.61m (5'3") x 1.10m (3'7")
Bathroom 4.05m (13'3") x 1.58m (5'2")

Gross internal floor area (m²): 66m²
EPC Rating: C

