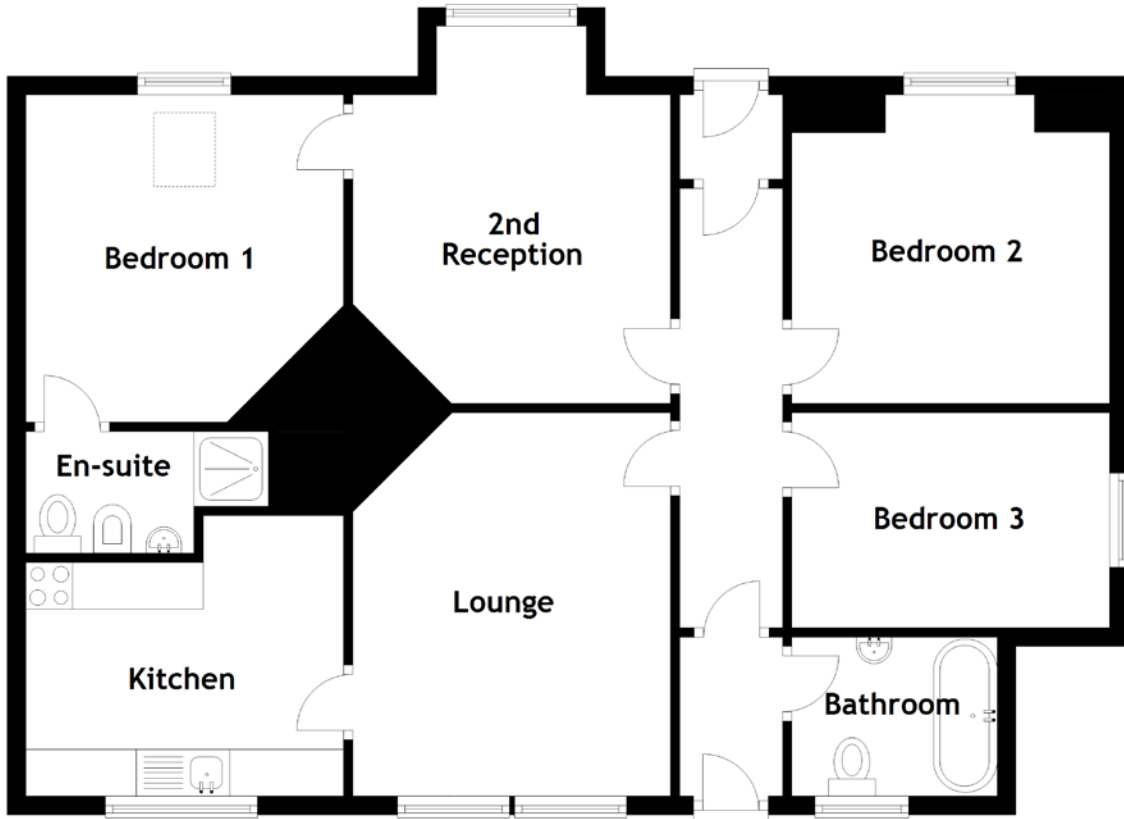


FLOOR PLAN, DIMENSIONS & MAP



Approximate Dimensions
(Taken from the widest point)

Lounge	4.10m (13'5") x 3.40m (11'2")
Kitchen	3.40m (11'2") x 3.00m (9'10")
2nd Reception	4.00m (13'1") x 3.40m (11'2")
Bedroom 1	3.50m (11'6") x 3.40m (11'2")

En-suite	2.60m (8'6") x 1.30m (4'3")
Bathroom	2.20m (7'3") x 1.70m (5'7")
Bedroom 2	3.40m (11'2") x 3.30m (10'10")
Bedroom 3	3.40m (11'2") x 2.20m (7'3")

Gross internal floor area (m²): 92m²
EPC Rating: F

